

Prices and Dates 2026

LSI schools in the UK, USA,
Canada, Australia, New Zealand,
France & Switzerland



LSI Schools Around The World

UK

LSI London Central

19-21 Ridgmount Street
London WC1E 7AH
Tel. +44 (0)207 467 6500
Email: lon@LSI.edu

LSI London Hampstead

13 Lyndhurst Terrace
London NW3 5QA
Tel. +44 (0)207 794 8111
E-mail: ham@LSI.edu

LSI Brighton

55-61 Portland Rd
Brighton BN3 5DQ
Tel. +44 (0)1273 722 060
E-mail: bri@LSI.edu

LSI Cambridge

41 Tenison Road
Cambridge CB1 2DG
Tel. +44 (0)1223 361 783
E-mail: cam@LSI.edu

USA

LSI Berkeley

2015 Center Street
Berkeley CA 94704
Tel. +1 510 841 4695
E-mail: ber@LSI.edu

LSI San Diego

1706 5th Avenue
San Diego CA 92101
Tel. +1 619 234 2881
E-mail: san@LSI.edu

LSI Boston

105 Beach Street
Boston MA 02111
Tel. +1 617 542 3600
E-mail: bos@LSI.edu

LSI New York

40 Rector Street,
10th Floor,
Suite 1000
New York NY 10006
Tel. +1 212 965 9940
E-mail: nyc@LSI.edu

Canada

LSI Vancouver

3rd Floor,
530 Hornby Street,
Vancouver, V6C 2E7
Tel. +1 604 683 7654
E-mail: van@LSI.edu

LSI Toronto

Suite 210,
1055 Yonge Street
Toronto ON M4W 2L2
Tel. +1 416 928 6888
E-mail: tor@LSI.edu

New Zealand

LSI Auckland

Level 1,
10-12 Scotia Place
Auckland 1010
Tel. +64 (0)9 303 3097
E-mail: auc@LSI.edu

Australia

LSI Brisbane

6/133 Leichhardt Street
Spring Hill
Brisbane QLD 4000
Tel. +61 (0)7 3221 6977
E-mail: bne@LSI.edu

France

LSI Paris

23 Rue du Renard
75004 Paris
Tel. +33 (0)1 4260 5370
E-mail: par@LSI.edu

Switzerland

LSI Zurich

Kreuzstrasse 36
8008 Zurich
Tel. +41 (0)44 251 58 25
E-mail: zur@LSI.edu



Visit lsi.edu to find out more about our schools and take a virtual tour

The LSI Experience

"LSI Hampstead provided an excellent environment to learn English and have fun. It was one of the best experiences of my life."

GABRIELLA ILLÉS, TV PRODUCER, HUNGARY

1

Your LSI programme starts at home



With E-LSI you can access learning materials and start your academic programme as soon as you book.

2

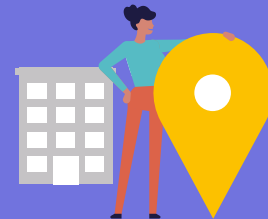
A warm welcome upon arrival



You will arrive to a warm welcome from your LSI host family or at your LSI residence to make sure you are comfortable and get fully settled.

3

Orientation in the school



First day in school



Continuous appraisal

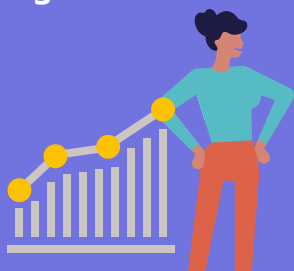


We continuously monitor your progress through a regular system of testing and customised learning plans. Through E-LSI you can access your academic information, including test scores and tutorial reports.

Our friendly staff will explain everything you need to know about your programme. You'll have a thorough skills test to ensure that we place you into the right class, we'll introduce you to our cultural and social programme and we'll ensure that you meet all your classmates and the school staff.

6

Clear and substantiated progress



Entry tests and exit tests, along with regular appraisal from our academic staff show you how much progress you've made during your programme.

7

Graduation ceremony



In LSI's graduation ceremony, you'll receive your graduation certificate and celebrate your programme with your new friends

* Not available in all LSI centres. Please check with the school at the time of booking

London Central (£UK)

General/Academic/English for Specific Purposes

	ACADEMIC TERM ABROAD	ACADEMIC YEAR ABROAD		
No. of weeks. Prices p/wk	1-3	4-11	12-23	24+
Afternoon 10 [^] - 8.3 hrs	190	185	180	175
General 20 - 16.7 hrs	365	355	345	310
General 20 - English for 30+ (1-9 weeks) - 16.7 hrs	365	355		
IELTS 20 - 16.7 hrs	365	355		
Intensive 24 - 20 hrs	415	400	380	350
Intensive 30 - 25hrs	480	435	410	370
Academic English 30 - (G20 + 10 Academic English)			410	370
Pre-sessional English (PSE) - (G20 + 10 PSE)			410	370
Business English 30 [~] (G20 + 10 Business English)	480	435	410	370
TOEFL 30 /IELTS 30 [~] (G20 + 10 IELTS/TOEFL)	480	435	410	370
No. of weeks. Course Prices		4	9	10
Cambridge 30 Exam Preparation	1740	3915	4350	
Course Prices p/wk				
English for Teaching I30 Closed groups only				480
English for Teaching G20 + 5 individual lessons p/wk				690
English for Teaching G20 + 10 individual lessons p/wk				1015
Personalised Programme Tailor-made courses available upon request. (e.g. fashion, social media etc.)			Contact LSI London	
One to One Lesson price p/lesson				65
Plus Courses Supplement 5/10 lessons				325/650

[^] Not available on a Short Term Study Visa.

[>] Options also available as Intensive 24 (120 + 4 lessons Business English/ IELTS/TOEFL)

Premium Courses & Certificates: Individual, Mini Groups & Professional Development

One-to-one				
No of lessons p/wk (45 min lesson)	20	30	40	50
Course price	1300	1950	2600	3250

PROFESSIONAL DEVELOPMENT

No. of weeks. Prices p/wk				
English for Public Speaking & Presentations ^{>>} 10 lessons p/wk			410	
Medical English ^{>>} 10 lessons p/wk				410
Legal English ^{>>} 10 lessons p/wk				410
English for Mining				410
Mini Group (Business/General English/Exam Prep) 5 student maximum				
No of lessons p/wk (45 min lesson)	20	30	40	
Course prices				
	1 wk	785	1085	1365
	2 wks	760	1050	1345
	3 wks	735	1020	1310
	4+ wks	710	1000	1290

9 Day Compact			
No of lessons p/wk		82	92
Course prices		5330	5980

^{>>} Max. class size 5 students. These courses can be taken independently, or in addition to General 20/IELTS 20.

Club 40+ Experience

No. of weeks. Prices p/wk		
3 activities supplement		325

Please note that these activities are supplementary and exclusively for students aged 40+. This programme needs to be booked in addition to the 120 (mixed-aged classes of 16+)

Experiences

1 day training session. Prices per person.

English with Barista Training	300 + 50 enrolment fee
-------------------------------	------------------------

Additional Costs

EXAM FEES

B2 First/C1 Advanced/C2 Proficiency	Contact LSI London
IELTS	Contact LSI London

OTHER FEES

Registration fee	95
Placement fee for volunteering in the UK (charities experience)	Contact LSI London
Courier fee	95
Health insurance p/wk	14
Airport transfer one way	
Heathrow/London City	135
Gatwick/Stansted/Luton	165

Accommodation

HOMESTAY (Prices per person p/wk)	B&B	HB
Single room (45-60min from LSI London)	225	265
Twin room* (45-60min from LSI London)	205	245

Supplements (Prices per person p/wk)	
Special diets B&B/HB	35/50
Summer (Jun 14 - Aug 23)	40
Christmas Supplement (Weekend of Dec 26/27 and Jan 02/03)	55
Up to 45min journey from LSI London	40
U18 Supplement	20
Executive room private bathroom (en-suite or sole use)	90

RESIDENCE

Canvas Walthamstow No. of weeks. Prices per person p/wk	2+
Single room, private bathroom**	410

UCL Residence	HB
Single room, shared bathroom (Jun 28 - Aug 9) 16 & 17 years old only	570

Wembley Arthur House No. of weeks. Prices per person p/wk	2-3	4+
Studios**	455	435

Accommodation prices are subject to change throughout the year. Therefore, it is important to contact LSI London to confirm the prices at the time of your exchange programme.

No summer supplement is charged for residences.

The arrival and departure dates for the homestay are either Saturday to Saturday or Sunday to Sunday.

* When two students book for the same start and end date.

** Minimum stay 2 weeks.

Other accommodation options available at www.lsi.edu/accommodation

Additional Course Information

Class size: Average 11 (max 16)

Lesson duration: 50 min (45 mins for One-to-one and Mini-Group)

Minimum age: 16 years old.

General Courses

Start dates for Elementary to Advanced levels: Every Monday.

Start dates for Beginner level: First Monday of Feb, Apr, Jun, Sep, Nov.

IELTS 20

Minimum Level: B1

Start dates: Jan 5 - 4 weeks / Mar 2 - 4 weeks / May 5[†] - 4 weeks / Jul 6 - 4 weeks / Sep 7 - 4 weeks / Nov 2 - 4 weeks

English 30+

Minimum Level: B1. Winter 2026: Jan 5 for 8 weeks. Summer 2026: Jun 29 for 9 weeks

Please note that students can join the lessons every Monday.

Academic Term Abroad (ATA)/Academic Year Abroad (AYA)

Start dates: First Monday of Jan, Apr and Sep.

Pre-sessional English (PSE)

Minimum Level: B1 Intermediate. Start dates: Jan 5, Jun 29, Sep 1. Max class size: 5 students

Business English 30

Minimum Level: B1. Start dates: Every Monday.

Academic English / Business English 30 / IELTS 30 & TOEFL 30

Minimum Level: B1. Start dates: Every Monday.

Exams are provided by third parties. For exam prices & test-centre locations, please contact LSI London.

Cambridge English Exam Preparation

Start dates: B2: Jan 5 - 10 wks, Apr 20 - 9 wks, Aug 3 - 4 wks

C1: Jan 5 - 10 wks, Aug 3 - 4 wks

C2: Jan 5 - 9 wks

Please be advised that class availability depends on demand.

Exam dates: B2: Mar 13, Jun 20, Aug 27

C1: Mar 14, Aug 28

C2: Mar 7

The exam dates could be paper-based or computer based.

Please be aware that all dates are subject to change at short notice based on demand.

English for Teaching

Start dates: Contact us.

Premium Courses

Start dates for One-to-one: Every Monday

Start dates for Mini-group: 1st monday of the month

Start dates for 9 Day Compact: Every Saturday

Professional Development Certificates

English for Public Speaking & Presentations, Medical English, Legal English Minimum Level: B1

Medical English: Jan 5 - 8 weeks, Jun 29 - 8 weeks, Aug 31[†] - 8 weeks

Legal English: Jan 5 - 8 weeks, Jun 29 - 8 weeks, Aug 31[†] - 8 weeks

English for Public Speaking & Presentations: Jan 5 - 4 weeks, Jun 29 - 4 weeks, Aug 31[†] - 4 weeks

English for Mining. Minimum level: B1 Intermediate. Start dates: Jan 5, Jun 29, Sep 1. Max class size: 5 students.

Please note that students can join the lessons every Monday.

Club 40+ Experience

Start dates: Jan 5 - 4 weeks; Feb 2 - 4 weeks; Mar 2 - 4 weeks; May 5[†] - 4 weeks; Jul 6 - 4 weeks;

Aug 3 - 4 weeks; Sep 7 - 4 weeks; Nov 2 - 4 weeks.

Students can join the programme every Monday within the 4-week course period.

[†]Start date due to UK public holiday.

English with Barista Training

Start dates: Every Monday.

Public Holidays

No instruction on the following dates: Apr 3, Apr 6, May 4, May 25, Aug 31

Christmas & New Year: School is closed from Dec 25, 2026 to Jan 3, 2027 inclusive.

2027: School reopens on Jan 4.

To obtain further information, please contact the school directly.

London Central Junior Courses (£UK)

www.lsi.edu/london

Registration fee	95
English Programmes (Prices per person p/wk)	
Tuition only for ages 12-17 ²	365
Tuition, lunch + activities for ages 12-17 ² winter only	620
English Programme + full board homestay in a twin room accommodation for ages 12-17 years ²	
Winter for groups & individuals	900
English Programme + full board Residential accommodation in single room at UCL for ages 12-17 years ²	
Summer only for groups & individuals	1350
Future Leaders Programme + full board Residential accommodation in single room at UCL for ages 12-17 years ²	
Summer only for groups	Contact us
Airport transfer required one way	
Heathrow/London City	135
Gatwick/Stansted/Luton	165
Check-in service ³	110

Class size: Average 14 (max 18).
Lesson duration: 50 min.
Ages: 12 - 17 years old.

Start dates (Homestay)

Winter 2026: Every Monday from Jan 4 to Feb 1 GROUPS & INDIVIDUALS

Start dates (UCL)

Summer 2026: Every Monday from 28 Jun to Aug 9. GROUPS & INDIVIDUALS
Future Leaders Summer 2026: Every Monday from Jun 28 to Aug 9. GROUPS ONLY
A Level Summer 2026: Every Monday from Jun 28 to Aug 9. GROUPS ONLY

Additional course information

Standard timetable: Arrivals are on Sunday and departures are on Saturday. The maximum booking length for accommodation homestay is 4 weeks (27 nights) for students under 16 years old.

Junior Courses for Groups

In addition to our published start dates, the school can accommodate groups of various age ranges at different times throughout the year. Maximum class sizes for closed groups are subject to negotiation.

London Hampstead Junior Courses - Summer Only (£UK)

www.lsi.edu/london

Registration fee	95
English Programmes (Prices per person p/wk)	
Tuition only for ages 6-11 ¹ and 12-17 ²	365
Tuition, lunch + activities for ages 12-17 only ²	620
OPTIONAL: 3 in-house afternoon activities for ages 6-11 only (lunch included)	90
English Programme + full board homestay in a twin room accommodation for ages 12-17 years ²	
Summer for groups & individuals	935
Future Leaders Programme + full board homestay in a twin room accommodation for ages 14-17 years ²	
Summer for groups	Contact us
A-level Programme + full board homestay in a twin room accommodation for for ages 14-17 years ²	
Winter for groups only	Contact us
Summer for groups only	Contact us
A-level Programme + full board Residential accommodation in single room at UCL for ages 12-17 years ²	
Summer for groups	Contact us
Airport transfer required one way	
Heathrow/London City	135
Gatwick/Stansted/Luton	165
Check-in service ³	110

Class size: 18 students.
Lesson duration: 50 min.
Ages: 6 - 11 years old (tuition only) & 12 - 17 years old.

Start dates (Homestay)

Summer 2026: Every Monday from Jun 22 to Aug 9. GROUPS & INDIVIDUALS
Future Leaders Summer 2026: Every Monday from Jun 22 to Aug 9. GROUPS ONLY
Summer A-levels: Every Monday from Jun 22 to Aug 9. GROUPS ONLY
Winter A-levels: Every Monday from Jan 4 - Feb 1. GROUPS ONLY

Additional course information

Standard timetable: Arrivals are on Sunday and departures are on Sunday. The maximum booking length for accommodation homestay is 4 weeks (27 nights) for students under 16 years old.

LSI reserves the right to change the campus location.

¹ Students aged 6-11 years must be accompanied by a parent or guardian. The programme for students in this age group includes tuition only.

² The programme does not include a travel card.

³ Compulsory fee for unaccompanied minors under 16.

Please get in touch for a quote regarding group prices.

Brighton (£UK)

www.lsi.edu/brighton

General/Academic/English for Specific Purposes

	ACADEMIC TERM ABROAD		ACADEMIC YEAR ABROAD	
No. of weeks. Prices p/wk	1-3	4-11	12-23	24+
Afternoon 10 [^] - 8.3 hrs	190	185	180	175
General 20 - 16.7 hrs	365	355	345	310
Intensive 24 - 20 hrs	415	400	380	350
Intensive 30 - 25 hrs	480	435	410	370
Academic English 30 (G20 + 10 Academic English)			410	
Business English 30 ² (G20 + 10 Business English)	480	435	410	370
TOEFL 30 /IELTS 30 ² (G20 + 10 IELTS/TOEFL)	480	435	410	370
No. of weeks. Course Prices			4	10
Cambridge 30 Exam Preparation			1740	4350
Intensive Cambridge CELTA Teacher Training [#]				from 1600
Prices p/wk				
English for Teaching Closed 130 groups only				480
English for Teaching G20 + 5 individual lessons p/wk				690
English for Teaching G20 + 10 individual lessons p/wk				1015
Personalised Programme Tailor-made courses available upon request. (e.g. Art, Tourism etc.)				Contact LSI Brighton
One to One Lesson price p/lesson				65
Plus Courses Supplement 5/10 lessons				325/650

[^] Not available on a Short Term Study Visa.

[>] Options also available as Intensive 24.

[#] Application required.

Premium Courses & Certificates: Individual, Mini Groups & Professional Development

One-to-one				
No of lessons p/wk:	20	30	40	50
Course price	1300	1950	2600	3250

9 Day Compact				
No of lessons p/wk			82	92
Course prices			5330	5980

Club 40+ Experience

3 activities supplement	Per person, p/wk			
				325

Please note that these activities are supplementary and exclusively for students aged 40+. This programme needs to be booked in addition to the I20 (mixed-aged classes of 16+).

Additional Costs

EXAM FEES

B2 First/C1 Advanced (18+ years old)	Contact LSI Brighton
IELTS	Contact LSI Brighton

OTHER FEES

Registration fee	95
Courier fee	100
Health insurance p/wk	14
Airport transfer one way, up to 1 hour waiting time	
Heathrow	195
Gatwick	115
Stansted/Luton	255

Accommodation

HOMESTAY (Prices per person p/wk)	B&B	HB
Single room	195	235
Twin room*	175	205

Supplements (Prices per person p/wk)	
Special diets B&B/HB	25/45
Summer (Jun 14 - Aug 23)	40
Christmas Supplement (Weekend of Dec 26/27 and Jan 02/03)	55
U18 Supplement	20
Executive room private bathroom (en-suite or sole use)	100

RESIDENCE (Prices per person p/wk)

Portland 55 - on-site residence	
Single room, en suite	300
Twin room*, en suite	275

Mountford Student House

Single room, shared bathroom	300
Twin room*, shared bathroom	275

Supplements (Prices per person p/wk)

Summer (Jun 14 - Aug 23)	40
--------------------------	----

The arrival and departure dates for the homestay are either Saturday to Saturday or Sunday to Sunday. Accommodation prices are subject to change throughout the year. Therefore, it is important to contact LSI Brighton to confirm the prices at the time of your exchange programme.

* When two students book for the same start and end date.

Other accommodation options available at www.lsi.edu/accommodation

Additional Course Information

Class size: Average 11 (max 16)
Lesson duration: 50 min (45 mins for One-to-One Lessons)
Minimum age: 16 years old.

General Courses

Start dates for Elementary to Advanced levels: Every Monday.
Start dates for Beginner level: First Monday of Feb, Apr, Jun, Sep, Nov.

Academic Term Abroad (ATA)/Academic Year Abroad (AYA)

Start dates: First Monday of Jan, Apr and Sep.

Business English 30

Minimum Level: B1. Start dates: Every Monday.

Cambridge English Exam Preparation

Start dates: B2: Jan 5 - 10 wks, Jul 6 - 4 wks

C1: Jan 5 - 10 wks, - Jul 6 - 4wks

Exam dates: B2: Mar 13, Jul 30

C1: Mar 14, Jul 31

** Computer-based exam.

The exam dates could be paper-based or computer based.

Please be aware that all dates are subject to change at short notice based on demand.

CELTA Teacher Training

Minimum Level: C1. Start dates: Contact us

Premium Courses

Start dates for One-to-one: Every Monday.

Start dates for 9 Day Compact: Every Saturday.

Club 40+ Experience

Start dates: Mar 2 - 4 weeks, May 5[†] - 4 weeks, Aug 31[†] - 4 weeks, Nov 2 - 4 weeks

Students can join the programme every Monday within the 4-week course period.

[†] Start date due to UK public holiday.

Public Holidays

No instruction on the following dates: Apr 3, Apr 6, May 4, May 25, Aug 31

Christmas & New Year: School is closed from Dec 25, 2026 to Jan 3, 2027 inclusive.

2027: School reopens on Jan 4.

To obtain further information, please contact the school directly.

www.lsi.edu/yl-brighton

Junior Courses

Registration fee	95
-------------------------	-----------

English Programmes (Prices per person p/wk)

English tuition only for ages 6-11 ¹ & 12-17	365
English tuition, lunch + activities for ages 12-17 only ²	550

English Programme+full board homestay, twin room accommodation for ages 12-17 years²

Winter for groups & individuals	795
Summer for groups & individuals	820

English Programme + Full board Residential accommodation in single room at UB for ages 12-17 years²

Summer for groups	Contact us
-------------------	------------

Airport transfer required one way

Heathrow	195
Gatwick	115
Stansted/Luton	255
Check-in service ³	100

¹ Students aged 6-11 years must be accompanied by a parent or guardian. The programme for students in this age group includes tuition only.

² The programme does not include a travel card.

³ Compulsory fee for unaccompanied minors under 16.

Class size: Average 14 (max 18)
Lesson duration: 50 mins
Ages: 6 - 11 years old (tuition only) & 12 - 17 years old.

Start dates (Homestay)

Every Monday from:

Winter 2026: Jan 4 to Feb 1 GROUPS & INDIVIDUALS.

Summer 2026: Jun 21 to Aug 9. GROUPS & INDIVIDUALS.

Additional course information

Standard timetable: Arrivals are on Sunday and departures are on Sunday. The maximum booking length for accommodation homestay is 4 weeks (27 nights) for students under 16 years old.

Junior Courses for Groups

In addition to our published start dates, the school can accommodate groups of various age ranges at different times throughout the year.

Cambridge (£UK)

General/Academic/English for Specific Purposes

	ACADEMIC TERM ABROAD		ACADEMIC YEAR ABROAD	
No. of weeks. Prices p/wk	1-3	4-11	12-23	24+
Afternoon 10[^] - 8.3 hrs	190	185	180	175
General 20 - 16.7 hrs	365	355	345	310
Intensive 24 - 20 hrs	415	400	380	350
Intensive 30 - 25 hrs	480	435	410	370
Academic English 30 (G20 + 10 Academic English)			410	370
Business English 30[^] (G20 + 10 Business English)	480	435	410	370
TOEFL 30 /IELTS 30[^] (G20 + 10 IELTS/TOEFL)	480	435	410	370
No. of weeks. Course Prices			4	10
Cambridge 30 Exam Preparation			1740	4350
One to One Lesson price p/lesson				65
Plus Courses Supplement 5/10 lessons				325/650

[^] Not available on a Short Term Study Visa.

[>] Options also available as Intensive 24.

Premium Courses & Certificates: Individual, Mini Groups & Professional Development

One-to-one				
No of lessons p/wk:	20	30	40	50
Course price	1300	1950	2600	3250
9 Day Compact				
No of lessons p/wk			82	92
Course prices			5330	5980

Club 40+ Experience

	Per person, p/wk			
3 activities supplement				325

Please note that these activities are supplementary and exclusively for students aged 40+. This programme needs to be booked in addition to the G20 (mixed-age classes of 16+).

Additional Costs

EXAM FEES

B2 First/ C1 Advanced*	Contact LSI Cambridge
IELTS*	Contact LSI Cambridge

* Exams are for 18+ years old.

OTHER FEES

Registration fee	95
Courier fee	100
Health insurance p/wk	14
Airport transfer one way, up to 1 hour waiting time	
Heathrow	220
Gatwick	245
Stansted	145
Luton	160

Junior Courses

Registration fee	95
English Programmes² (Prices per person p/wk)	
English tuition only for ages 9-11 ¹ (summer only) and 12-17	365
English tuition + Lunch + activities for ages 9-11 ¹ (summer only) and 12-17	700
English Programme + full board homestay in a twin room accommodation for ages 12-17 years	
Winter for groups & individuals	830
English Programme + full board residential accommodation single room at Abbey College for ages 9-17 years	
Single room, ensuite (summer only)	1210
Future Leaders + full board residential accommodation single room at Abbey College for ages 12-17	
Summer for groups only	Contact us
Airport transfer required one way	
Heathrow	220
Gatwick	245
Stansted	145
Luton	160
Check-in service ³	100

Accommodation

HOMESTAY (Prices per person p/wk)	B&B	HB
Single room	215	255
Twin room*	180	220

Supplements (Prices per person p/wk)

Special diets B&B/HB	40/50
Summer (Jun 14 - Aug 23)	45
Christmas Supplement (Weekend of Dec 26/27 and Jan 02/03)	60
U18 Supplement	20

RESIDENCE (Prices per person p/wk)

The Willows (Self catering, all year)	from
Single	280
Single with shower	300
Executive single, ensuite	330
Studio	375

Abbey College

Single room, private bathroom, (Jun 28 - Aug 9) for 16 & 17 years old only	420
----------------------------------------------------------------------------	-----

Accommodation prices are subject to change throughout the year. Therefore, it is important to contact LSI Cambridge to confirm the prices at the time of your exchange programme.

No summer supplement is charged for residences.

The arrival and departure dates for Homestays and Residences are Sunday to Sunday.

* When two students book for the same start and end date.

Other accommodation options available at www.lsi.edu/accommodation

Additional Course Information

Class size: Average 11 (max 15)

Lesson duration: 50 min (45 mins for One-to-One Lessons)

Minimum age: 16 years old.

General Courses

Start dates for Elementary to Advanced levels: Every Monday.

Start dates for Beginner level: First Monday of Feb, Apr, Jun, Sep, Nov.

Academic Term Abroad (ATA)/Academic Year Abroad (AYA)

Start dates: Jan 5, Apr 7[†], Sep 7

Business English 30

Minimum Level: B1. Start dates: Every Monday.

Cambridge English Exam Preparation

Start dates: B2: Jan 5 - 10 wks, Jul 6 - 4 wks

C1: Jan 5 - 10 wks, - Jul 6 - 4wks

Exam dates: B2: Mar 13, Jul 30

C1: Mar 14, Jul 31

The exam dates could be paper-based or computer based.

Please be aware that all dates are subject to change at short notice based on demand.

Premium Courses

Start dates for One-to-one: Every Monday.

Start dates for 9 Day Compact: Every Saturday.

Club 40+ Experience

Start dates: Mar 2 - 4 weeks, May 5[†] - 4 weeks, Sep 1[†] - 4 weeks, Nov 2 - 4 weeks.

Students can join the programme every Monday within the 4-week course period.

[†]Start date due to UK public holiday.

Public Holidays

No instruction on the following dates: Apr 3, Apr 6, May 4, May 25, Aug 31

Christmas & New Year: School is closed from Dec 25, 2026 to Jan 3, 2027 inclusive.

2027: School reopens on Jan 4.

To obtain further information, please contact the school directly.

¹ Students will generally be classed in groups aged 9-12 and 13-17. Classes may occasionally cross these age ranges if of academic benefit. Ages 9-11 are only accepted if accompanied by an elder sibling, guardian or group leader.

² The programme does not include a travel card.

³ Compulsory fee for unaccompanied minors under 16, optional for juniors aged 16-17 years.

Class size: Average 14 (max 18)

Lesson duration: 50 min.

Ages: 9 - 17 years old (Summer) & 12 - 17 years old (Winter).

Start dates (Homestay)

Every Monday from:

Winter 2026: Jan 4 to Feb 1 GROUPS & INDIVIDUALS

Start dates (Residence)

Summer 2026: Every Monday from Jun 28 to Aug 9. GROUPS & INDIVIDUALS

Future Leaders, Summer 2026: Every Monday from Jun 28 to Aug 9. GROUPS ONLY

Additional course information

Standard timetable: Arrivals are on Sunday and departures are on Saturday. The maximum booking length for accommodation homestay is 4 weeks (27 nights) for students under 16 years old.

Junior Courses for Groups

In addition to our published start dates, the school can accommodate groups of various age ranges at different times throughout the year. Maximum class sizes for closed groups are negotiable.

New York (\$US)

www.lsi.edu/ny

General/Academic/English for Specific Purposes

	ACADEMIC TERM ABROAD	ACADEMIC YEAR ABROAD		
No. of weeks. Prices p/wk	1-3	4-11	12-23	24+
Afternoon 10 [^] - 8.3 hrs	285	255		
General 20 - 16.7 hrs	525	505	485	445
TOEFL 20 - 16.7 hrs	525	505		
Business English 20 (20 Business English) 16.7 hrs	525	505	485	
Intensive 25 - 20.8 hrs	605	575	545	505
Intensive 30 - 25 hrs	660	625	595	545
Academic English 30 (G20 + 10 Academic English)			595	545
Business English 30 ² (G20 + 10 Business English)	660	625	595	545
TOEFL 30 /IELTS 30 ² (G20 + 10 IELTS/TOEFL)	660	625	595	545

Prices p/wk

SAT/GMAT Closed groups only or private lessons Contact LSI NY
Personalised Programme Tailor-made courses available upon request for closed groups

 Fashion, social media and others Contact LSI NY

 Cambridge Exam Preparation Contact LSI NY

 English for Teaching Closed groups, G20 + 5/10 individuals Contact LSI NY

 Club 40+ Experience Contact LSI NY
One to One Lesson price p/lesson 100
Plus Courses Supplement 5/10 lessons 500/1000
[^] Not available on a Student Visa.

[>] Options also available as Intensive 25.

Premium Courses & Certificates: Individual, Mini Groups & Professional Development

PROFESSIONAL DEVELOPMENT

 No. of weeks. Prices p/wk 1-4
English for Public Speaking & Presentations 10 lessons p/week^{>>} 655

One-to-one

 No of lessons p/wk: 20 30 40

 Course price 2000 3000 4000

Mini Group (Business/General English/Exam Prep)

 No of lessons p/wk: 20 30

 Course prices 1 wk 1210 1755
2 wks 1185 1730
3 wks 1180 1690
4+ wks 1170 1645
^{>>} Max. class size is 5 students. These course can be taken independently, or in addition to General 20/TOEFL 20.

Additional Costs

OTHER FEES

Registration fee	185
Courier fee	100
Health insurance p/wk	40
Health insurance (65+) p/wk	75
Airport transfer one way	195
Airport transfer U18 supplement	75

Accommodation

 Placement fee 160

HOMESTAY (Prices per person p/wk)	B&B	HB
Single room, Manhattan	595	
Twin room, Manhattan*	550	
Single room, Outside Manhattan	420	490
Twin Room, Outside Manhattan*	375	450

Other Supplements (Per person p/wk)

Special diets B&B/HB	25/50
U18 supplement	20
Summer (Jun 14 - Aug 23)	40
Christmas Supplement (Weekend of Dec 26/27 and Jan 02/03)	60
Executive room private bathroom (en-suite or sole use)	185

RESIDENCE (Per person p/wk, 3 weeks maximum)

YMCA Residence*, West Side

 Single, semi-private washroom see prices on accommodation brochure

 Single room, shared bathroom see prices on accommodation brochure

 Twin room, shared bathroom* see prices on accommodation brochure
[#]Includes access to sports and fitness facilities. No meals are included.

Arrival and departure dates for Homestay: Saturday to Saturday or Sunday to Sunday.

Please note that accommodation prices are subject to changes throughout the year. It is important to contact LSI NY to confirm the prices at the time of your exchange programme.

^{*} For students booking together with the same arrival and departure dates.

Other accommodation options available at www.lsi.edu/accommodation

Additional Course Information

Class size: Average 11 (max 16). Lesson duration: 50 min (50 mins for One-to-One Lessons).

Minimum age: 16 years old.

General Courses

 Start dates for all levels: Every Monday. Start dates for Beginner level: Jan 5, Apr 7[†], Jun 29, Sep 28.

TOEFL 20

Minimum Level: B1

 Start dates: Jan 5 - 8 weeks, April 7[†] - 8 weeks, June 29 - 8 weeks & September 28 - 8 weeks.

Business English 20

Minimum Level: B1. Start dates: 1st monday of each month

Academic Term Abroad (ATA)/Academic Year Abroad (AYA)

 Start dates: Jan 5, Apr 7[†], Sep 7

Business English 30

Minimum Level: B1. Start dates: Every Monday.

Academic English/TOEFL 30 & IELTS 30

 Start date: Every Monday. Recommended start dates: Jan 5, Apr 7[†], Jun 29, Sep 28

Exams are provided by third parties. For exam prices & test-centre locations, please contact LSI NY.

[†]Start date due to public holiday.

English for Public Speaking & Presentations

 Minimum Level: B1. Start dates: Jan 5 - 4 weeks, Jun 29 - 4 weeks, Sep 8[†] - 4 weeks.

Please note that students can join the lessons every Monday.

Premium Courses

Start dates for One-to-one: Every Monday.

Start dates for Mini-group: 1st monday of the month.

Public Holidays

No instruction on the following dates: Jan 19, Feb 16, Apr 3, Apr 6, May 25, Jun 19, Jul 3, Sep 7, Oct 12, Nov 11, Nov 26-27.

Christmas & New Year: School is closed from Dec 25, 2026 to Jan 3, 2027 inclusive.

2027: School reopens on Jan 4.

To obtain further information, please contact the school directly.

www.lsi.edu/ny

Junior Courses for Closed Groups

Registration fee **185**
English Programmes for ages 12-17 years (Prices per person p/wk)

 Winter tuition only 525

 Summer tuition only 550
English Programme+full board homestay in a twin room accommodation

 for ages 12-17 years¹

 Winter Contact LSI New York

 Summer Contact LSI New York

 Health Insurance required p/wk 40
Airport transfer required one way **195**

 Airport transfer U18 supplement each way² 75
¹ Travel cost included.

² Compulsory fee for unaccompanied minors under 16.

Class size: Average 15 (max 18)

Lesson duration: 50 min.

Ages: 12 - 17 years old.

Start dates (Homestay & Residential):

Winter 2026: Every Monday from Jan 4 to Feb 1 GROUPS ONLY

Summer 2026: Every Monday from Jun 21 to Aug 2 GROUPS ONLY

Additional course information

Standard timetable: Arrivals on Sundays and departures on Sunday.

Junior Courses for Groups

In addition to our published start dates, the school can accommodate groups of various age ranges at different times throughout the year. Maximum class sizes for closed groups are negotiable.

San Francisco/Berkeley (\$US)

www.lsi.edu/berkeley

General/Academic/English for Specific Purposes

	ACADEMIC TERM ABROAD		ACADEMIC YEAR ABROAD	
No. of weeks. Prices p/wk	1-3	4-11	12-23	24+
Afternoon 10 [^] - 8.3 hrs	260	250		
General 20 - 16.7 hrs	495	475	445	410
Intensive 25 - 20.8 hrs	565	535	505	470
Intensive 30 - 25 hrs	630	600	565	515
Academic English 30 (G20 + 10 Academic English)			565	515
Business English 30 [^] (G20 + 10 Business English)	630	600	565	515
TOEFL 30 /IELTS 30 [^] (G20 + 10 IELTS/TOEFL)	630	600	565	515
Groups only / Prices p/wk				
English for Teaching Closed groups only or private lessons				Contact LSI Berkeley
SAT/GMAT Closed groups only or private lessons				Contact LSI Berkeley
One to One Lesson price p/lesson				95
Plus Courses Supplement 5/10 lessons				475/950

[^] Not available on a Student Visa.

[>] Options also available as Intensive 25.

Premium Courses & Certificates: Individual, Mini Groups & Professional Development

PROFESSIONAL DEVELOPMENT

No. of weeks. Prices p/wk	1-4		
Executive English 10 lessons p/week	655		
One-to-one			
No of lessons p/wk:	5	10	
Course price	475	950	
Mini Group (Business/General English/Exam Prep)			
No of lessons p/wk:	20	30	
Course prices	1 wk	1190	1745
	2 wks	1170	1705
	3 wks	1140	1655
	4+ wks	1120	1625

Additional Costs

EXAM FEES

TOEFL	Contact LSI Berkeley
-------	----------------------

OTHER FEES

Registration fee	185
Courier fee	100
Health insurance p/wk	40
Health insurance (65+) p/wk	75
Airport transfer one way, up to 1 hour waiting time	155
Airport transfer U18 supplement each way	75

Accommodation

Placement fee	160	
HOMESTAY (Prices per person p/wk for 1+ weeks)	B&B	HB
Single room	335	405
Twin room*	290	365
Supplements (Prices per person p/wk)		
Special diets B&B/HB	25/50	
Summer (Jun 14 - Aug 23)	40	
Christmas Supplement (Weekend of Dec 26/27 and Jan 02/03)	60	
U18 supplement	20	
Executive room private bathroom (en-suite or sole use)	90	

RESIDENCE (Prices per person p/wk)

Downtown Berkeley - YMCA **	From
Single room, shared bathroom	385

Please note that accommodation prices are subject to changes throughout the year. It is important to contact LSI Berkeley to confirm the prices at the time of your exchange programme.

Arrival and departure dates for Homestay: Saturday to Saturday or Sunday to Sunday.

* When two students book for the same start and end date.

** A \$150 non-refundable placement fee is charged and required for booking confirmation.

Other accommodation options available at www.lsi.edu/accommodation

Additional Course Information

Class size: Average 11 (max 16)

Lesson duration: 50 min (50 mins for One-to-One Lessons).

Minimum age: 16 years old.

General Courses

Start dates for Elementary to Advanced levels: Every Monday.

Start dates for Beginner level: Jan 5, Apr 7[†], Jun 29, Sep 28.

Academic Term Abroad (ATA)/Academic Year Abroad (AYA)

Start dates: Jan 5, Apr 7[†], Sep 7

Business English 30

Minimum Level: B1. Start dates: Every Monday.

Academic English, TOEFL 30 & IELTS 30

Recommended start dates: Jan 5, Apr 7[†], Jun 29, Sep 28.

Exams are provided by third parties. For exam prices & test-centre locations, please contact LSI Berkeley.

[†]Start date due to public holiday.

Premium Courses

Start dates for One-to-one: Every Monday.

Start dates for Mini-group: 1st monday of the month.

Start dates for Executive English 10: Every Monday.

Public Holidays

No instruction on the following dates: Jan 19, Feb 16, Apr 3, Apr 6, May 25, Jun 19, Jul 3, Sep 7, Oct 12, Nov 11, Nov 26-27.

Christmas & New Year: School is closed from Dec 25, 2026 to Jan 3, 2027 inclusive.

2027: School reopens on Jan 4.

To obtain further information, please contact the school directly.

www.lsi.edu/yl-berkeley

Junior Courses for Closed Groups

Registration fee	185
English Programmes for ages 12-17 years (Prices per person p/wk)	
Winter tuition only	495
Summer tuition only	520
Programme + full board homestay in twin room accommodation for ages 12-17 years ¹	
Winter	Contact LSI Berkeley
Summer	Contact LSI Berkeley
Health Insurance required p/wk	40
Airport transfer required one way ²	155
Airport transfer U18 supplement each way	75

¹ Travel cost included.

² Compulsory fee for unaccompanied minors under 16.

Class size: Average 15 (max 18)

Lesson duration: 50 min.

Ages: 12 - 17 years old.

Start dates (Homestay)

Winter 2026: Every Monday from Jan 4 to Feb 1 GROUPS ONLY

Summer 2026: Every Monday from Jun 21 to Aug 2 GROUPS ONLY

Additional course information

Standard timetable: Arrivals on Sunday and departures on Sunday.

Junior Courses for Groups

In addition to our published start dates, the school can accommodate groups of various age ranges at different times throughout the year. Maximum class sizes for closed groups are negotiable.

Boston (\$US)

www.lsi.edu/boston

General/Academic/English for Specific Purposes

No. of weeks. Prices p/wk	ACADEMIC TERM ABROAD		ACADEMIC YEAR ABROAD	
	1-3	4-11	12-23	24+
Afternoon 10[^] - 8.3 hrs	260	250	445	410
General 20 - 16.7 hrs	495	475	505	470
Intensive 25 - 20.8 hrs	565	535	565	515
Intensive 30 - 25 hrs	630	600	565	515
Academic English 30 (G20 + 10 Academic English)			565	515
Business English 30[^] (G20 + 10 Business English)	630	600	565	515
TOEFL 30 /IELTS 30[^] (G20 + 10 IELTS/TOEFL)	630	600	565	515
Prices p/wk				
SAT/GMAT Closed groups only or private lessons			Contact LSI Boston	
Personalised Programme Tailor-made courses available upon request for closed groups				
Fashion, social media and others			Contact LSI Boston	
English for Teaching Closed groups, G20 + 5/10 individuals			Contact LSI Boston	
One to One Lesson			95	
Plus Courses Supplement 5/10 lessons			475/950	

[^] Not available on a Student Visa.

[>] Options also available as Intensive 25.

Premium Courses & Certificates: Individual, Mini Groups & Professional Development

PROFESSIONAL DEVELOPMENT

No. of weeks. Prices p/wk	1-4		
Executive English 10 lessons p/week	655		
One-to-one			
No of lessons p/wk:	5	10	20
Course price	475	950	1900
Mini Group (Business/General English/Exam Prep)			
No of lessons p/wk:	20	30	
Course prices	1 wk	1190	1745
	2 wks	1170	1705
	3 wks	1140	1655
	4+ wks	1120	1625

Additional Costs

EXAM FEES

B2 First/CI Advanced	Contact LSI Boston
----------------------	--------------------

OTHER FEES

Registration fee	185
Courier fee	100
Health insurance p/wk	40
Health insurance (65+) p/wk	75
Airport transfer one way, up to 1 hour waiting time	175

Accommodation

Placement fee	160	
HOMESTAY (Prices per person p/wk for 1+ weeks)	B&B	HB
Single room	325	395
Twin room*	280	355
Supplements (Prices per person p/wk)		
Special diets B&B/HB	25/50	
Summer (Jun 14 - Aug 23)	40	
Christmas Supplement (Weekend of Dec 26/27 and Jan 02/03)	60	
UI8 supplement	20	
Executive room private bathroom (en-suite or sole use)	90	

RESIDENCE (Prices per person p/wk)

ESL Townhouse (No meals, 18 weeks minimum staying)	
Studio Apartment	from 730
2-Bedroom Apartment	from 840

Please note that accommodation prices are subject to changes throughout the year. It is important to contact LSI Boston to confirm the prices at the time of your exchange programme.

The arrival and departure dates for the homestay are either from Saturday to Saturday or from Sunday to Sunday.

Arrival and departure dates for Residence: Saturday to Saturday.

* When two students book for the same start and end date.

Other accommodation options available at www.lsi.edu/accommodation

Additional Course Information

Class size: Average 11 (max 16)

Lesson duration: 50 min (50 mins for One-to-One Lessons)

Minimum age: 16 years old.

General Courses

Start dates for Elementary to Advanced levels: Every Monday.

Start dates for Beginner level: Jan 5, Apr 7[†], Jun 29, Sep 28.

Academic Term Abroad (ATA)/Academic Year Abroad (AYA)

Start dates: Jan 5, Apr 7[†], Sep 8[†]

Business English 30

Minimum Level: B1. Start dates: Every Monday.

Academic English/TOEFL 30 & IELTS 30

Start dates: Jan 5, Apr 7[†], Jun 29, Sep 28.

Exams are provided by third parties. For exam prices & test-centre locations, please contact LSI Boston.

[†]Start date due to public holiday.

Premium Courses

Start dates for One-to-one: Every Monday.

Start dates for Mini-group: 1st monday of the month.

Start dates for Executive English 10: Every Monday.

Public Holidays

No instruction on the following dates: Jan 19, Feb 16, Apr 3, Apr 6, May 25, Jun 19, Jul 3, Sep 7, Oct 12, Nov 11, Nov 26-27.

Christmas & New Year: School is closed from Dec 25, 2026 to Jan 3, 2027 inclusive.

2027: School reopens on Jan 4.

To obtain further information, please contact the school directly.

www.lsi.edu/yl-boston

Junior Courses for Closed Groups

Registration fee	185
English Programmes for ages 12-17 years	(Per person p/wk)
Tuition only	Contact LSI Boston
Tuition + activities	Contact LSI Boston
Tuition + full board homestay + activities	Contact LSI Boston
Tuition + half board residential accommodation + activities - summer only	Contact LSI Boston
Health Insurance required (p/wk)	40
Airport transfer required one way	175

Class size: Average 15 (max 18)

Lesson duration: 50 min.

Ages: 12 - 17 years old.

Start dates (Homestay)

Every Monday from:

Winter 2026: Every Monday from Jan 4 to Feb 1 GROUPS ONLY

Summer 2026: Every Monday from Jun 21 to Aug 9 GROUPS ONLY

Additional course information

Standard timetable: Arrivals are on Sunday and departures are on Saturday.

Junior Courses for Groups

In addition to our published start dates, the school can accommodate groups of various age ranges at different times throughout the year. Maximum class sizes for closed groups are negotiable.

San Diego (\$US)

General/Academic/English for Specific Purposes

	ACADEMIC TERM ABROAD	ACADEMIC YEAR ABROAD		
No. of weeks. Prices p/wk	1-3	4-11	12-23	24+
Afternoon 10 [^] - 8.3 hrs	260	245		
General 20 - 16.7 hrs	495	475	445	410
Intensive 25 - 20.8 hrs	565	535	505	470
Intensive 30 - 25 hrs	630	600	565	515
Academic English 30 Pathway Programme (G20 + 10 Academic English)			565	515
Business English 30 [^] (G20 + 10 Business English)	630	600	565	515
TOEFL 30 /IELTS 30 [^] (G20 + 10 IELTS/TOEFL)	630	600	565	515
SAT/GMAT Closed groups only or private lessons	Contact LSI San Diego			
Personalised Programme Tailor-made courses available upon request for closed groups	Contact LSI San Diego			
Fashion, social media and others	Contact LSI San Diego			
Cambridge Exam Preparation	Contact LSI San Diego			
One to One Lesson price p/lesson	95			
Plus Courses Supplement 5/10 lessons	475/950			

[^] Not available on a Student Visa.

[>] Options also available as Intensive 25.

Premium Courses & Certificates: Individual, Mini Groups & Professional Development

PROFESSIONAL DEVELOPMENT

No. of weeks. Prices p/wk	1-4		
Executive English 10 lessons p/week	655		
One-to-one			
No of lessons p/wk:	10	20	
Course price	950	1900	
Mini Group (Business/General English/Exam Prep)			
No of lessons p/wk:	20	30	
Course prices	1 wk	1185	1745
	2 wks	1170	1705
	3 wks	1140	1655
	4+ wks	1120	1625

Additional Costs

EXAM FEES

B2 First/C1 Advanced	Contact LSI San Diego
----------------------	-----------------------

OTHER FEES

Registration fee	185
Courier fee	100
Health insurance p/wk	40
Health insurance (65+) p/wk	75
Airport transfer one way, up to 1 hour waiting time	170
Airport transfer U18 supplement	80

Accommodation

Placement fee	160	
HOMESTAY (Prices per person p/wk)	B&B	HB
Single room	320	390
Twin room*	275	350
Supplements (Prices per person p/wk)		
Special diets B&B/HB	25/50	
Summer (Jun 14 - Aug 23)	40	
Christmas Supplement (Weekend of Dec 26/27 and Jan 02/03)	60	
U18 supplement	20	
Executive room private bathroom (en-suite or sole use)	90	

Please note that accommodation prices are subject to changes throughout the year. It is important to contact LSI San Diego to confirm the prices at the time of your exchange programme.

The arrival and departure dates for the homestay are either Saturday to Saturday or Sunday to Sunday.

* When two students book for the same start and end date.

Other accommodation options available at www.lsi.edu/accommodation

Additional Course Information

Class size: Average 11 (max 16).

Lesson duration: 50 min (50 mins for One-to-One Lessons)

Minimum age: 16 years old.

General Courses

Start dates for Elementary to Advanced levels: Every Monday.

Start dates for Beginner level: Jan 5, Apr 7, Jun 29, Sep 28.

Pathway Programme, Academic Term Abroad (ATA)/Academic Year Abroad (AYA)

Start dates: Jan 5, Apr 6, Sep 7

Business English 30

Minimum Level: B1. Start dates: Every Monday.

Academic English, TOEFL 30 & IELTS 30

Start dates: Every Monday.

Recommended start dates: Jan 5, Apr 7, Jun 29, Sep 28.

Exams are provided by third parties. For exam prices & test-centre locations, please contact LSI San Diego.

† Start date due to public holiday.

Premium Courses

Start dates for One-to-one: Every Monday.

Start dates for Mini-group: 1st Monday of the month.

Start dates for Executive English 10: Every Monday.

Public Holidays

No instruction on the following dates: Jan 19, Feb 16, Apr 3, Apr 6, May 25, Jun 19, Jul 3, Sep 7, Oct 12, Nov 11, Nov 26-27.

Christmas & New Year: School is closed from Dec 25, 2026 to Jan 3, 2027 inclusive.

2027: School reopens on Jan 4.

To obtain further information, please contact the school directly.

Junior Courses

Registration fee	185
English Programmes (Prices per person p/wk)	
Winter tuition only for ages 6-11 ¹ & 12-17 years	495
Summer tuition only for ages 6-11 ¹ & 12-17 years	520
Winter or Summer English tuition, lunch + activities for ages 12-17 years	1000
English Programme+full board homestay in a shared room accommodation for ages 12-17 years	
Winter for groups & individuals	1480
Summer for groups & individuals	1510
Health insurance required p/wk	40
Airport transfer one way	170
Airport transfer U18 supplement	80

¹ Please Note: Students aged 6-11 years must be accompanied by a parent or guardian. The programme for ages 6-11 includes tuition only. English tuition and activities packages may be available.

² Compulsory fee for unaccompanied minors under 16.

Class size: Average 15 (max 18)

Lesson duration: 50 min.

Ages: 6 - 11 years old & 12 - 17 years old.

Start dates (Homestay)

Every Monday from:

Winter 2026: Jan 4 to Feb 1 GROUPS & INDIVIDUALS

Summer 2026: Jun 21 to Aug 2 GROUPS & INDIVIDUALS

Additional course information

Standard timetable: Arrivals on Sunday and departures on Saturday.

Junior Courses for Groups

In addition to our published start dates, the school can accommodate groups of various age ranges at different times throughout the year. Maximum class sizes for closed groups are negotiable.

Toronto (\$CD)

General/Academic/English for Specific Purposes

	ACADEMIC TERM ABROAD		ACADEMIC YEAR ABROAD	
No. of weeks. Prices p/wk	1-3	4-11	12-23	24+
Afternoon 10 [^] - 8.3 hrs	230	225		
General 20 - 16.7 hrs	435	420	410	390
IELTS 20/TOEFL 20 - 16.7 hrs	435	420		
Business English 20 (LOGE + 10 Business English) 16.7 hrs	435	420	410	
Academic English 20 Pathway Programme - 16.7 hrs	435	420	410	
Intensive 25 - 20.8 hrs	480	470	460	430
Intensive 30 - 25 hrs	520	510	500	470
Academic English 30 Pathway Programme (G20 + 10 Academic English)			500	470
Business English 30 [^] (G20 + 10 Business English)	520	510	500	470
TOEFL 30/IELTS 30 [^] (G20 + 10 IELTS/TOEFL)	520	510	500	470
No. of weeks. Course Prices			8	10
Cambridge 30 Exam Preparation			4080	5100
One to One Lesson price p/lesson				105
Plus Courses Supplement 5/10 lessons				525/1050

[^] Not available on a Study Permit.

[>] Options also available as Intensive 25.

Premium Courses & Certificates: Individual, Mini Groups & Professional Development

One-to-one				
No of lessons p/wk:	20	30	40	50
Course price	2100	3150	4200	5250

No. of weeks. Prices p/wk	1-4	1-8
English for Public Speaking & Presentations ^{>>} 10 lessons p/wk	650	
Medical English ^{>>} 10 lessons p/wk	650	
Legal English ^{>>} 10 lessons p/wk	650	
English for Mining	650	

>> These are premium certificate courses in small groups of 5 students. These courses can be taken independently, or in addition to General 20.

Mini Group (Business/General English/Exam Prep)				
No of lessons p/wk:	20	30		
Course prices		1 wk	1305	1730
		2 wks	1170	1530
		3 wks	1105	1480
		4+ wks	1080	1445

9 Day Compact No of lessons:		82	92
Course price		8610	9660

Club 40+ Experience

Per person, p/wk

3 activities supplement	445
--------------------------------	-----

Please note that these activities are supplementary and exclusively for students aged 40+. This programme needs to be booked in addition to the G20 (mixed-age classes of 16+).

Experiences

1 day training session, 3 courses available (3 levels). Prices per person per level.

English with Barista Training	279
--------------------------------------	-----

Additional Costs

EXAM FEES	
B2 First/C1 Advanced	420

OTHER FEES	
Registration fee	185
Textbook (Cambridge Exams)	100
Courier fee	125
Health insurance p/wk	40
Notary fees for unaccompanied minors (U18)	70
Airport transfer one way, up to 1 hour waiting time	150

Accommodation

Placement fee	230
---------------	-----

HOMESTAY (Prices per person p/wk)		
	B&B	HB
Single room	275	310
Twin room*	250	285

Supplements (Prices per person p/wk)	
Special diets B&B/HB	30/50
Summer (Jun 14 - Aug 23)	40
Christmas Supplement (Weekend of Dec 26/27 and Jan 02/03)	55
U18 supplement	15
Executive room private bathroom (en-suite or sole use)*	90

RESIDENCE (Prices per person p/wk)	
Toronto Metropolitan University (May-Aug)	
Single room, private bathroom	from 605
Casa Residences (\$280 placement fee required)	
Single room, shared bathroom	from 490
Shared room, shared bathroom*	from 390

Please note that accommodation prices are subject to changes throughout the year. It is important to contact LSI Toronto to confirm the prices at the time of your exchange programme.

Arrival and departure dates for Homestay: Saturday to Saturday or Sunday to Sunday.

* Please check availability.

* When two students book for the same start and end date.

Other accommodation options available at www.lsi.edu/accommodation

Additional Course Information

Class size: Average 11 (max 17) Lesson duration: 50 min (50 mins for One-to-One Lessons). Minimum age: 16 years old.

General Courses

Start dates for Elementary to Advanced levels: Every Monday.

Start dates for Beginner level: Jan 5, Apr 7, Jun 29, Sep 28

IELTS 20/TOEFL 20

Minimum Level: B1. Start dates: Jan 5 - 8 weeks, Apr 7 - 8 weeks, Jun 29 - 8 weeks, Sep 28 - 8 weeks

Business English 20

Minimum Level: B1. Start dates: 1st Monday of each month

Academic 20 Pathway Programme, Academic English 30 Pathway Programme

Minimum Level: B2. Start dates: Jan 5, Apr 7, Jun 29, Sep 28

Business English 30

Minimum Level: B1. Start dates: Every Monday.

TOEFL 30 & IELTS 30

Start dates: Every Monday. Recommended start dates: Jan 5, Apr 7, Jun 29, Sep 28.

Exams are provided by third parties. For exam prices & test-centre locations, please contact LSI Toronto.

Cambridge English Exam Preparation

Start dates: B2: Jan 5 - 10 wks, Jul 6 - 8 wks, C1: Jan 5 - 10 wks, Jul 6 - 8 wks

Exam dates: B2: Mar 13, Aug 27, C1: Mar 14, Aug 28

The exam dates could be paper-based or computer based.

Please be aware that all dates are subject to change at short notice based on demand.

Professional Development Certificates

Minimum Level: B1. B1 Intermediate for English for Mining.

Medical English: Jan 5 - 8 weeks, Jun 29 - 8 weeks, Sep 8 - 8 weeks

Legal English: Jan 5 - 8 weeks, Jun 29 - 8 weeks, Sep 8 - 8 weeks

English for Public Speaking & Presentations: Jan 5 - 4 weeks, Jun 29 - 4 weeks, Sep 8 - 4 weeks

English for Mining. Start dates: Jan 5, Jun 29, Sep 8. Max class size: 5 students.

Please note that students can join the lessons every Monday.

Premium Courses

Start dates for One-to-one: Every Monday. Start dates for Mini-group: 1st Monday of the month.

Start dates for 9 Day Compact: Every Saturday.

Club 40+ Experience

Start dates: Mar 2 - 4 weeks; May 4 - 4 weeks; Sep 8 - 4 weeks; Nov 2 - 4 weeks.

Students can join the programme every Monday within the 4-week course period.

†Start date due to public holiday.

English with Barista Training

Start dates: First Monday of the month.

Public Holidays

No instruction on the following dates: Feb 16, Apr 3, Apr 6, May 18, Jul 1, Aug 3, Sep 7, Sep 30, Oct 12, Nov 11. Christmas & New Year: School is closed from Dec 25, 2026 to Jan 3, 2027 inclusive.

2027: School reopens on Jan 4.

To obtain further information, please contact the school directly.

Toronto Junior Courses (\$CD)

Registration fee	185
English Programmes (Prices per person p/wk)²	
Tuition only for ages 6-11 ¹ & 12-17 years	435
Tuition, lunch + activities for ages 12-17 years only	920
English Programme+full board homestay in a twin room accommodation for ages 12-17 years²	
Winter	1465
Summer	1535
English Programme+full board residential accommodation for ages 13-17 years² (groups only)	
Single room (summer only)	Contact us
Airport transfer required one way³	150
Health Insurance (p/wk)	40
Custodianship service available (if requested by Canadian Embassy)²	70

¹ Students aged 6-11 years must be accompanied by a parent or guardian. The programme for ages 6-11 includes tuition only. English tuition and activities package may be available.

² Travel Cost not included.

³ Compulsory fee for unaccompanied minors under 16.

Class size: Average 15 (max 18).

Lesson duration: 50 min.

Ages: 6 - 11 years old & 12 - 17 years old.

Start dates (Homestay):

Winter 2026: Every Monday from Jan 4 to Feb 1 GROUPS ONLY

Summer 2026: Every Monday from Jun 21 to Aug 2 GROUPS & INDIVIDUALS

Start dates (Residence):

Summer 2026: Every Monday from Jun 21 to Aug 2 GROUPS ONLY

Additional course information

Standard timetable: Arrivals on Sunday and departures on Sunday.

Junior Courses for Groups

In addition to our published start dates, the school can accommodate groups of various age ranges at different times throughout the year. Maximum class sizes for closed groups are negotiable.

Vancouver (\$CD)

www.lsi.edu/vancouver

General/Academic/English for Specific Purposes

	ACADEMIC TERM ABROAD	ACADEMIC YEAR ABROAD		
No. of weeks. Prices p/wk	1-3	4-11	12-23	24+
Afternoon 10[^] - 8.3 hrs	230	225		
General 20 - 16.7 hrs	435	420	410	390
IELTS 20/TOEFL 20 - 16.7 hrs	435	420		
Business English 20 (LOGE + 10 Business English) 16.7 hrs	435	420	410	
Intensive 25 - 20.8 hrs	480	470	460	430
Intensive 30 - 25 hrs	520	510	500	470
Academic English 30 Pathway Programme (G20 + 10 Academic English)			500	470
Business English 30^{>} (G20 + 10 Business English)	520	510	500	470
TOEFL 30/IELTS 30^{>} (G20 + 10 IELTS/TOEFL)	520	510	500	470
No. of weeks. Course Prices			8	10
Cambridge 30 Exam Preparation			4080	5100
One to One Lesson price p/lesson				105
Plus Courses Supplement 5/10 lessons				525/1050

[^] Not available on Study Permit.

[>] Options also available as I25.

Premium Courses & Certificates: Individual, Mini Groups & Professional Development

One-to-one				
No of lessons p/wk:	20	30	40	50
Course price	2100	3150	4200	5250
Mini Group (Business/General English/Exam Prep) - max 5 students				
No of lessons p/wk:			20	30
Course prices		1 wk	1305	1730
		2 wks	1170	1530
		3 wks	1105	1480
		4+ wks	1080	1445
9 Day Compact No of lessons:				
			82	92
Course price			8610	9660

Club 40+ Experience

	Per person, p/wk
3 activities supplement	445

Please note that these activities are supplementary and exclusively for students aged 40+. This programme needs to be booked in addition to the G20 (mixed-age classes of 16+).

Experiences

1 day training session, 4 courses available (4 levels). Prices per person per level.

English with Barista Training	279
--------------------------------------	-----

Additional Costs

EXAM FEES

B2 First/C1 Advanced/C2 Proficiency	Contact LSI Vancouver
-------------------------------------	-----------------------

OTHER FEES

Registration fee	185
Textbook (Cambridge Exams)	100
Courier fee	125
Health insurance p/wk	40
Notary fees for unaccompanied minors (U19)	70
Airport transfer one way, up to 1 hour waiting time	160

Accommodation

Placement fee		230
HOMESTAY (Prices per person p/wk)		
	B&B	HB
Single room	275	310
Twin room*	250	285
Supplements (Prices per person p/wk)		
Special diets B&B/HB		30/50
Summer (Jun 14 - Aug 23)		40
Christmas Supplement (Weekend of Dec 26/27 and Jan 02/03)		55
U18 supplement		15
Executive room private bathroom (en-suite or sole use)**		90
RESIDENCE (Prices per person p/wk)		
Hotel Willo (previously known as YWCA Hotel)		
Single room, shared bathroom		Contact LSI Vancouver
Double room, private bathroom*		Contact LSI Vancouver
Summer Supplement (May to Sep)		Contact LSI Vancouver

A non-refundable move-in fee of \$230 will be charged.

Please note that accommodation prices are subject to changes throughout the year. It is important to contact LSI Vancouver to confirm the prices at the time of your exchange programme.

Arrival and departure dates for Homestay: Saturday to Saturday or Sunday to Sunday.

* When two students book for the same start and end date.

** Please check availability.

Other accommodation options available at www.lsi.edu/accommodation

Additional Course Information

Class size: Average 11 (max 17).

Lesson duration: 50 min (50 mins for One-to-One Lessons).

Minimum age: 16 years old.

General Courses

Start dates for Elementary to Advanced levels: Every Monday.

Start dates for Beginner level: Jan 5, Apr 7, Jun 29, Sep 28.

IELTS 20/TOEFL 20

Minimum Level: B1. Start dates: Jan 5 - 8 weeks, Apr 7+ - 8 weeks, Jun 29 - 8 weeks, Sep 28 - 8 weeks

Pathways/Academic Term Abroad (ATA)/Academic Year Abroad (AYA)

Start dates: Jan 5, Apr 7, Jun 29, Sep 28

Business English 20

Minimum Level: B1. Start dates: 1st Monday of each month

Business English 30

Minimum Level: B1. Start dates: Every Monday.

Academic English / TOEFL 30 & IELTS 30

Start dates: Every Monday. Recommended start dates: Jan 5, Apr 7, Jun 29, Sep 28.

Exams are provided by third parties. For exam prices & test-centre locations, please contact LSI Vancouver.

Cambridge English Exam Preparation

Start dates: B2: Jan 5 - 10 wks, Jul 6 - 8 wks, C1: Jan 5 - 10 wks, Jul 6 - 8 wks

Exam dates: B2: Mar 13, Aug 27, C1: Mar 14, Aug 28

All exams are paper based. Please be aware that all dates are subject to change at short notice based on demand.

Premium Courses

Start dates for One-to-one: Every Monday. Start dates for Mini-group: 1st Monday of the month.

Start dates for 9 Day Compact: Every Saturday.

Club 40+ Experience

Start dates: Mar 2 - 4 weeks, May 4 - 4 weeks, Sep 7+ - 4 weeks, Nov 2 - 4 weeks.

Students can join the programme every Monday within the 4-week course period.

†Start date due to public holiday.

English with Barista Training

Start dates: Contact LSI Vancouver.

Public Holidays

No instruction on the following dates: Feb 16, Apr 3, Apr 6, May 18, Jul 1, Aug 3, Sep 7, Sep 30, Oct 12, Nov 11. Christmas & New Year: School is closed from Dec 25, 2026 to Jan 3, 2027 inclusive.

2027: School reopens on Jan 4.

To obtain further information, please contact the school directly.

www.lsi.edu/yl-vancouver

Junior Courses

Registration fee	185
English Programmes for ages 12-17 years¹ (Prices per person p/wk)	
English tuition only	435
Tuition, lunch + activities	920
English Programme+full board homestay in a twin room accommodation for ages 12-17 years¹	
Winter	1465
Summer	1535
Health Insurance required (p/wk)	40
Airport transfer required one way ²	160
Custodianship service available if requested by Embassy	70

¹ Travel Cost not included

² Compulsory fee for unaccompanied minors under 16.

Class size: Average 15 (max 18)

Lesson duration: 50 min.

Ages: 12 - 17 years old.

Start dates (Homestay):

Winter 2026: Every Monday from Jan 4 to Feb 1 GROUPS ONLY

Summer 2026: Every Monday from Jun 21 to Aug 2 GROUPS & INDIVIDUALS

Additional course information

Standard timetable: Arrivals are on Sunday and departures are on Saturday.

Junior Courses for Groups

In addition to our published start dates, the school can accept groups for a variety of age ranges at various times throughout the year. Maximum class sizes for closed group, subject to negotiation.

Auckland (\$NZ)

General/Academic/English for Specific Purposes

	ACADEMIC TERM ABROAD		ACADEMIC YEAR ABROAD	
No. of weeks. Prices p/wk	1-3	4-11	12-23	24+
Afternoon 10 ^ - 8.3 hrs	250	245		
General 20 ^ / IELTS 20 - 16.7 hrs	475	470	465	
General 20 - English for 30+ ^ - 16.7 hrs	475	470		
Intensive 24 - 20 hrs	535	525	520	510
Evening Intensive 24 - 20 hrs	535	525	520	510
Intensive 30 - 25 hrs	600	595	590	575
Academic English 30 Pathway Programme (G20 + 10 Academic English)			590	575
Business English 30 ^ (G20 + 10 Business English)	600	595	590	575
IELTS 30/ TOEFL 30 >>>	600	595	590	575
No. of weeks. Course Prices	10			
Cambridge 30 Exam Preparation	5950			
Groups option available. Prices p/wk				
English for Aviation G20 + 5 individual lessons p/wk	1025			
English for Aviation G20 + 10 individual lessons p/wk	1575			
English for Teaching G20 + 5 individual lessons p/wk	1025			
English for Teaching G20 + 10 individual lessons p/wk	1575			
One to One Lesson >>> price p/lesson	110			
Plus Courses Supplement 5/10 lessons	550/1100			

^ Not available on a Student Visa. > Options also available as Intensive 24. >> Available as G20 + 10 IELTS/TOEFL, Intensive 24 and Intensive 30. >>> Options also available as TOEFL 30.

Premium Courses & Certificates: Individual, Mini Groups & Professional Development

One-to-one						
No. of lessons p/wk:	5	10	20	30	40	50
Course price	550	1100	2200	3300	4400	5500
Mini Group (Business/General English/Exam Prep) 5 student maximum						
No. of weeks. Prices p/wk:	1		2	3	4+	
Course price - 20 lessons p/wk	1670		1555	1510	1490	
No. of weeks. Prices p/wk			1-4	1-8		
English for Public Speaking & Presentations † 10 lessons p/wk			795			
Medical English † 10 lessons p/wk			795			
Legal English † 10 lessons p/wk			795			

† Max. class size is 6 students. These courses can be taken independently, or in addition to General 20/IELTS 20.

Club 40+ Experience

No. of weeks. Prices p/wk	1-4
3 activities supplement	630

Please note that these activities are supplementary and exclusively for students aged 40+. This programme needs to be booked in addition to the G20 (mixed-age classes of 16+).

Experiences

No. of weeks. Course prices	1
English with Barista Training	200

Additional Costs

EXAM FEES Prices p/person, p/exam	
B2 First/C1 Advanced/C2 Proficiency	480
IELTS/ TOEFL	Contact LSI Auckland

An extra fee applies for reservations less than 6 weeks before exam date.

OTHER FEES

Registration fee	230
Course materials p/wk up to max. 20 wks per booking	20
Demi au pair placement fee	Contact LSI Auckland
Courier fee	145
Health insurance p/wk	Contact LSI Auckland
Airport transfer one way, up to 1 hour waiting time	145
Airport transfer one way (U18) ^{††}	155

^{††} Compulsory for U18. U18 students must book both arrival and departure transfers with LSI (roundtrip).

Junior Courses

Registration fee	230
-------------------------	-----

English Programmes for ages 14-17 years (Prices per person p/wk)	
English tuition only	475

Programme+half board homestay in single or twin room accommodation for ages 12-17 years	
------------------------------------------------------------------------------------------------	--

Winter Contact LSI Auckland

Summer Contact LSI Auckland

Health Insurance required (p/wk) Contact LSI Auckland

Airport transfer required one way ¹	155
-------------------------------------------------------	-----

¹ Compulsory for U18. U18 students must book both arrival and departure transfers with LSI (roundtrip).

Accommodation

Placement fee	330	
HOMESTAY (Prices per person p/wk)	B&B	HB
Single room	325	410
Twin room*	325	410
Single/Twin room under 18s	430	
Supplements (Prices per person p/wk)		
Special diets B&B/HB	40/80	
Christmas (Weekend of Dec 26/27 and Jan 02/03)	90	
Executive room private bathroom (en-suite or sole use)	90	
Winter fuel supplement (June 1 to August 31)	10	
RESIDENCE (Prices per person, p/wk)		
YMCA (No meals)	Single room	Double room* Twin room* (2 beds)
	505	285 320

Park Towers** 4 wks minimum stay (Prices per person, p/wk)	
2026 bookings - furnished studio	335
2026 bookings - furnished studio (couples)*	240

Accommodation prices are subject to change throughout the year. Therefore, it is important to contact LSI Auckland to confirm the prices at the time of your exchange programme.

Arrival and departure dates for Homestay: Saturday to Saturday or Sunday to Sunday.

* When two students book for the same start and end date.

** A \$100 non-refundable move-in/arrival pack rental fee is charged.

Other accommodation options and terms and conditions available at www.lsi.edu/accommodation

Additional Course Information

Class size: Average 11 (max 17). Lesson duration: 50 min (45 mins for One-to-One Lessons). Minimum age: 14 years old.

General Courses

Start dates for Elementary to Advanced levels: Every Monday.

Start dates for Beginner level: First Monday of Jan, Mar, May, Jul, Sep, Nov. General 20 - English for 30+. Minimum Level: B1. Start dates: Every Monday.

Evening Intensive 24

Start dates for Elementary* to Advanced: Every Monday.

+ Beginners to Elementary levels will need to study in the morning programme until reaching the acceptable level.

Pathway Programme/Academic Term Abroad (ATA)/Academic Year Abroad (AYA)

Start date: First Monday of Jan & Jul.

Business English 30

Minimum Level: B1. Start dates: Every Monday.

Academic English/IELTS 30

Start dates: Every Monday. Exams are provided by third parties. For exam prices & test-centre locations, please contact LSI Auckland.

TOEFL I24 & I30

Start dates: 2 Mar, 7 Sep.

Cambridge Exam Preparation

Start dates: B2: Jan 5 - 10 wks, Apr 20 - 9 wks, Oct 5 - 10 wks

C1: Jan 5 - 10 wks, Apr 20 - 9 wks, Oct 5 - 10 wks

Upper Intermediate and Advance classes use Cambridge Exam books.

Exam dates: B2: Mar 13, Jun 20, Dec 12, C1: Mar 14, Jun 20, Dec 12

Please be aware that all dates are subject to change at short notice based on demand.

Professional Development Certificates

Minimum Level: B1

Medical English: Sep 7 for 8 weeks.

Legal English: Sep 7 for 8 weeks.

English for Public Speaking & Presentations: Sep 7 for 4 weeks.

Please note that students can join the lessons every Monday.

English for Aviation, English for Teaching Start date: Contact LSI Auckland.

Premium Courses Start dates: Every Monday.

Club 40+ Experience

Start Dates: Mar 2 - 3 weeks, May 4 - 3 weeks, Sep 7 - 3 weeks, Nov 2 - 3 weeks.

Students can join the programme every Monday within the 3-week course period.

English with Barista Training Start date: Contact LSI Auckland.

Public Holidays

No instruction on the following dates: Jan 26, Feb 6, Apr 3, Apr 6, Apr 27, Jun 1, Jul 10, Oct 26, Dec 25, Dec 28

Christmas and New Year Holidays: School is closed from Dec 21, 2026 to Jan 3, 2027 inclusive.

2027: School reopens on Jan 5.

To obtain further information, please contact the school directly.

Class size: 16 students

Lesson duration: 50 min.

Ages: 12 - 17 years old.

Start dates (Homestay):

Winter 2026: Every Monday from Jan 4 to Feb 1 GROUPS ONLY

Summer 2026: Every Monday from Jun 28 to Aug 2 GROUPS ONLY

Additional course information

Standard timetable: Saturday to Saturday or Sunday to Sunday.

Junior Courses for Groups

In addition to our published start dates, the school can accept groups for a variety of age ranges at various times throughout the year. Maximum class sizes for closed group, subject to negotiation.

Brisbane (\$AU)

www.lsi.edu/brisbane

General/Academic/English for Specific Purposes

	ACADEMIC TERM ABROAD	ACADEMIC YEAR ABROAD		
No. of weeks. Prices p/wk	1-3	4-11	12-23	24+
Afternoon 10 ^ - 8.3 hrs	250	240		
General 20 (Up to 17 wks) ^ - 16.7hrs	460	445	435	410
Intensive 24 - 20 hrs	535	520	510	485
Intensive 30 - 25 hrs	590	575	565	525
BEC Vantage (Business English Certificate) 30	590	575	565	525
IELTS 30 Exam Preparation (G20 + 10 IELTS/TOEFL)	590	575	565	525
No. of weeks. Course Prices		8	9	12
Intensive 30 with Cambridge Exam Preparation		4600	5175	6780
One to One Lesson price p/lesson				125
Plus Courses Supplement 5/10 lessons				625/1250

^ Not available on a Student Visa.

Premium Courses & Certificates: Individual, Mini Groups & Professional Development

One-to-one				
No of lessons p/wk:	20	30	40	50
Course price	2500	3750	5000	6250
No. of weeks. Prices p/wk	1-8			
English for Mining	795			

Experiences

1 day training session. Prices per person.	Basics	Master
English with Barista Training >	119	199

> This course is provided by a Registered RTO not LSI.

Additional Costs

EXAM FEES

B2 First/C1 Advanced	Contact LSI Brisbane
IELTS	Contact LSI Brisbane

OTHER FEES

Registration fee	275
Course materials p/wk (up to a max. of 20 wks)	15
Demi Au Pair placement fee	995
Courier fee	95
Overseas student health Insurance p/wk	Contact LSI Brisbane
Airport transfer one way, up to 1 hour waiting time ¹	165

¹ Compulsory for U18. U18 students must book both arrival and departure transfers with LSI (roundtrip).

Accommodation

Placement fee	300	
HOMESTAY (Prices per person p/wk)	B&B	HB
Single room	340	410
Twin room*	335	405
Supplements (Prices per person p/wk)		
Special diets B&B/HB	95	
Executive room private bathroom (en-suite or sole use)	95	
U18 Full Board (p/wk)	105	
RESIDENCE (Prices per person, p/wk)		
Adalong Student Guesthouse	1+ weeks	
Single, shared bathroom	300	
Student One	see accommodation brochure	

Please note that accommodation prices are subject to changes throughout the year. It is important to contact LSI Brisbane to confirm the prices at the time of your exchange programme.

Arrival and departure dates for Homestay: Saturday to Saturday or Sunday to Sunday.

* When two students book for the same start date.

Other accommodation options available at www.lsi.edu/accommodation

Additional Course Information

Class size: Average 11 (max 18).

Lesson duration: 50 min (45 mins for One-to-One Lessons).

Minimum age: 16 years old.

General Courses

Start dates for Elementary to Advanced levels: Every Monday.

Start dates for Beginner level: First Monday of Jan 5, Mar 30, Jun 22, Sep 21.

Intensive 30 with Cambridge Exam Preparation and BEC Vantage

Start dates: B2: Jan 5 - 8 wks; Sep 21 - 12 wks

C1: Jan 5 - 9 wks; Sep 21 - 12 wks

Please be advised that classes will only be conducted if there are a minimum of 5 students.

Exam dates: B2 First: Mar 2, Dec 14

C1 Advanced: Mar 9, Sep 14

The exam dates are paper-based. Computer-based exams may be subject to alternative dates upon request and availability of the center.

For exam prices & test-centre locations, please contact LSI Brisbane.

Please be aware that all dates are subject to change at short notice based on demand.

BEC Vantage (Business English Certificate) 30

Minimum Level: B1. Start dates: Every Monday.

IELTS Exam Preparation 30

Start dates: Jan 5, Jun 22

Exam dates: Mar 30, Sep 21

Exams are provided by third parties. For exam prices & test-centre locations, please contact LSI Brisbane.

Premium Courses Start dates (one-to-one): Every Monday.

Professional Development Certificates

English for Mining. Start dates: Jan 5, Jun 29, Sep 7. Max class size: 5 students.

Please note that students can join the lessons every Monday.

English with Barista Training Start dates: Every Monday.

Public Holidays

No instruction on the following dates: Jan 26, Apr 3-6, Apr 25, May 4, Aug 12, Oct 5, Dec 24, Dec 25-26, Dec 28. Christmas & New Year: School is closed from Dec 21, 2026 to Jan 3, 2027 inclusive.

2027: School reopens on Jan 4.

To obtain further information, please contact the school directly.

CRICOS Provider 01678A

www.lsi.edu/brisbane

Junior Courses

Registration fee	275
English Programmes for ages 14-17 years ¹ (Prices per person p/wk)	
English tuition only	460
English Programme+full board homestay in a twin room accommodation for ages 14-17 years ¹	
Winter	Contact LSI Brisbane
Summer	Contact LSI Brisbane
Health Insurance required (p/wk)	Contact LSI Brisbane
Airport transfer required one way ²	165

¹ Travel Cost not included

² Compulsory for U18. U18 students must book both arrival and departure transfers with LSI (roundtrip).

Class size: 18 students

Lesson duration: 50 min.

Ages: 14 - 17 years old.

Start dates (Homestay):

Winter 2026: Every Monday from Jan 4 to Feb 1 GROUPS ONLY

Summer 2026: Every Monday from Jun 28 to Aug 2 GROUPS ONLY

Additional course information

Standard timetable: Saturday to Saturday or Sunday to Sunday.

Junior Courses for Groups

In addition to our published start dates, the school can accept groups for a variety of age ranges at various times throughout the year. Maximum class sizes for closed group, subject to negotiation.

Paris (€)

General/Academic

	ACADEMIC TERM ABROAD	ACADEMIC YEAR ABROAD		
No. of weeks. Prices p/wk	1-3	4-11	12-23	24+
Afternoon 10[^] - 8.3 hrs	225	200		
General 20# - 16.7 hrs	445	400	380	355
Intensive 24 - 20 hrs	500	465	435	405
Intensive 30 - 25 hrs	565	515	490	465
Academic French 30 (G20 + 10 Academic French)				465
No. of weeks. Course prices	From			
TEF (2 min wks course)	1130			
No. of weeks	8			
DEL F (course price)	4120			
CCIP (course price)	4120			
Personalised Programme (e.g. fashion, social media, olympic history, etc)	Tailor-made courses available upon request.			Contact LSI Paris
One to One Lesson price p/lesson	75			
Plus Courses Supplement 5/10 lessons	375/750			

[^] Not available on a Student Visa.

[#] Not available to student visa holders from some countries. Check with your embassy.

Premium Courses & Certificates: Individual, Mini Groups & Professional Development

One-to-one				
No of lessons p/wk:	20	30	40	50
Course price	1500	2250	3000	3750
9 Day Compact No of lessons:			82	92
Course price			6150	6900

French Experiences

2 wks courses must be taken in addition to a General 20 course (prices per person, p/wk)

Cooking	300
History of Art	350

Additional Costs

EXAM FEES

DEL F A2/B1	265
DEL F B2	320
e-TEF Compulsory	Contact LSI Paris

OTHER FEES

Registration fee	115
Courier fee	140
Airport Transfer Roissy CDG/Orly Up to 1 hour waiting time	145

Accommodation

Placement fee					115
HOMESTAY (zone 1-2, prices per person p/wk)	B&B	Semi HB-3*	Semi HB-5**	HB	
Single room	295	340	380	420	
Twin room***	270	310	340	375	

Supplements (Prices per person p/wk)

Special diets B&B/HB	80
Executive room private shower†	85

RESIDENCE (prices per person, p/wk)

Séjours et Affaires Davout & Séjours et Affaires Saint Mandé	
Private studios en-suite bathroom and kitchenette	Contact LSI Paris

Appart'City La Villette & Appart'City Grande Bibliothèque

Private studios en-suite bathroom and kitchenette	Contact LSI Paris
---------------------------------------------------	-------------------

Please note that due to high demand in Paris, students have one month to confirm their accommodation. Accommodation prices are subject to change throughout the year. It is important to contact LSI Paris to confirm the prices at the time of your exchange programme.

Arrival and departure dates for Homestay: Sunday to Sunday.

HB is compulsory for U18s.

* 3 dinners per week.

** No evening meal on Friday and Saturday.

*** When two students book for the same start date.

† Private toilet is not always guaranteed and is subject to availability.

Other accommodation options available at www.lsi.edu/accommodation

Additional Course Information

Class size: Average 11 (max 16).

Lesson duration: 50 min (45 mins for One-to-One Lessons).

Minimum age: 16 years old.

General Courses

Start dates for Elementary to Advanced levels: Every Monday.

Start dates for Beginner level: First Monday of every month.

Afternoon 10: Minimum Level: A2

TEF

Start date: Every Monday.

CCIP

Start date: Contact LSI Paris.

DEL F

Start date: Jan 5, Apr 13, Aug 10

Academic French 30/Academic Term Abroad (ATA)/Academic Year Abroad (AYA)

Start date: Every Monday.

Recommended start dates: First Monday of Jan, Apr and Sep.

Premium Courses

Start dates for One-to-one: Every Monday.

Start dates for 9 Day Compact: Every Saturday.

French Experiences

French with Cooking: Jan 12 - 2 wks, Apr 13 - 2 wks, Jul 6 - 2 wks, Aug 3 - 2 wks.

French with History of Art: Mar 16 - 2 wks, Jun 8 - 2 wks, Jul 20 - 2 wks, Sep 14 - 2 wks.

Public Holidays

No instruction on the following dates: Apr 6, May 1, May 8, May 14, May 25, Jul 14, Nov 11.

Christmas & New Year: School is closed from Dec 21, 2026 to Jan 3, 2027 inclusive

2027: School reopens on Jan 4.

To obtain further information, please contact the school directly.

Junior Courses

Registration fee	115
French Programmes for ages 12-17 years (Prices per person p/wk)	
French tuition only	445
French tuition + activities	Contact LSI Paris
French tuition + full board residence + activities	Contact LSI Paris
Airport transfer required one way	145

Please note: Junior programmes in Paris are offered for closed groups only.

Class size: Average 15 (max 18).

Lesson duration: 50 min.

Ages: 12 - 17 years old.

Start dates

Summer 2026: Every Monday from 28 Jun to Aug 2. GROUPS ONLY

Additional course information

Standard timetable: Arrivals on Sunday and departures on Saturday.

Junior Courses for Groups

In addition to our published start dates, the school can accommodate groups of various age ranges at different times throughout the year. Maximum class sizes for closed groups are negotiable.

Zurich (CHF)

General/Academic

	ACADEMIC TERM ABROAD	ACADEMIC YEAR ABROAD		
No. of weeks. Prices p/wk	1-3	4-11	12-23	24+
Afternoon 10[^] - 8.3 hrs	275	255		
General 20 - 16.7 hrs	525	485	465	410
Intensive 30 - 25 hrs	695	655	630	580
No. of weeks. Prices p/package				12
Goethe-Zertifikat B1 course price				7560
Goethe-Zertifikat B2 course price				7560
One to One Lesson price p/lesson				110
Plus Courses Supplement 5/10 lessons				550/1100

[^] Not available on a Student Visa.

Premium Courses & Certificates: Individual, Mini Groups & Professional Development

One-to-one						
No of lessons p/wk:	5	10	20	30	40	50
Course prices p/package	550	1100	2200	3300	4400	5500
9 Day Compact No of lessons:						
				82		92
Course prices p/package				9020		10120

Club 40+ Experience

No. of weeks. Prices p/wk					1-4
3 activities supplement					395

Please note that these activities are supplementary and exclusively for students aged 40+. This programme needs to be booked in addition to the G20. Students can choose to have lessons in mixed-aged classes of 16+.

Additional Costs

EXAM FEES

Goethe-Zertifikat B1	315
Goethe-Zertifikat B2	370

OTHER FEES

Registration fee	135
Course materials p/wk up to max 20 wks	15
Courier fee	175
Visa processing fee	100
Airport transfer one way, up to 1 hour waiting time	165

Accommodation

Placement fee		135
---------------	--	-----

HOMESTAY (zone 1-2, prices per person p/wk)	B&B	HB
Single room (Zone 1 & Zone 2)	375	470
Twin room (Zone 1 & Zone 2)*	285	365

Supplements (Prices per person p/wk)

Executive supplement single/twin	90/70
----------------------------------	-------

RESIDENCE (Prices per person, p/month)

LSI can advise on residences and availability but students are required by Swiss law to make bookings directly with the accommodation provider

Maximilianeum 13 (self-catering, prices per person, p/month)	from
Single room	630
Single room with balcony	850

Please note that accommodation prices are subject to changes throughout the year. It is important to contact LSI Zurich to confirm the prices at the time of your exchange programme.

Arrival and departure dates for Homestay: Sunday to Saturday.

* When two students book for the same start and end date.

Other accommodation options available at www.lsi.edu/accommodation

Additional Course Information

Class size: Average 8 (max 12).

Lesson duration: 45 min (45 mins for One-to-One Lessons).

Minimum age: 16 years old.

General Courses

Start dates for Elementary+ to Advanced levels: Every Monday.

Start dates for Beginner level: First Monday of every second month.

Beginners recommended start dates: Jan 5, Mar 2, May 4, Jun 29, Aug 31, Nov 2.

For interim start dates please contact the school directly.

Goethe-Zertifikat B1 (ZD), B2 (GZ)

Start date: Feb 2 - 12 wks, Apr 7[†] - 12 wks, Jun 1 - 12 wks, Aug 31 - 12wks.

Exam dates: Apr 22-24, Aug 24-27, Nov 18-11.

Please be aware that exam dates are subject to change at short notice based on demand. To obtain further information, please reach out to the school directly.

Premium Courses

Start dates for One-to-one: Every Monday.

Start dates for 9 Day Compact: Every Saturday.

Club 40+ Experience

Start dates: Mar 2 - 4 wks, May 4 - 4 wks, Aug 31 - 4 wks, Nov 2 - 4 wks.

Students can join the programme every Monday within the 4-week course period.

[†] Start date due to public holiday

Public Holidays

No instruction on the following dates: Apr 3, Apr 6, May 1, May 14, May 25, Aug 1.
Christmas & New Year: School is closed from Dec 21, 2026 to Jan 3, 2027 inclusive.

2027: School reopens on Jan 4.

To obtain further information, please contact the school directly.

LSI Terms and Conditions

CONDITIONS OF ENROLMENT

1. Application

Please send the signed enrolment form to your chosen LSI school or Educational Tour Operator with the enrolment fee and, if applicable, the courier fee. Students over 18 (19 in Vancouver) must sign the enrolment form to say that they have read and agree with these terms and conditions. The parents or guardians of students under 18 (19 in Vancouver) must read and also sign the enrolment form on their behalf. Your privacy is important to us. Please note that by submitting your personal data to us, you are accepting the terms described in our privacy policy, which can be found at: www.lsi.edu/privacy

2. Payment conditions

All course fees must be paid in full no later than 30 days before the course starts. If a booking is made less than 30 days before the course starts, the fees are immediately payable. If payment in full has not been received, you will not be allowed to start your course.

Australia: For individual courses longer than 24 weeks, 50% of tuition fees and 100% of all other fees must be paid in full no later than 30 days before the course starts. If a booking is made less than 30 days before the course starts, the fees are immediately payable. The remainder of the tuition fees is required two weeks before the start of the second study period of any individual course.

New Zealand: All student fees are to be deposited in the following account: Language Studies International (NZ) Ltd – Student Fees Trust Account (details on invoice). In the event of insolvency, regulatory closure or withdrawal, or partial withdrawal of accreditation, LSI students may apply to dfk Oswin Griffiths Carlton for a refund of unused fees. Please post claims to LSI Student Fees Trust, dfk Oswin Griffiths Carlton, Level 4, 52 Symonds St, Auckland 1010, NZ

3. Bank charges

LSI reserves the right to charge up to an additional 2.75% processing fee for all credit card payments. For payments made via bank transfer, LSI reserves the right to charge an additional fee to cover bank charges. In both these cases, students will be informed of any such fees at the time of purchase.

4. Visa information

It is the responsibility of the student to arrange all applicable travel permits or visas and to have a valid passport and leave to remain for the whole period of study. The student may be asked to make payment in full prior to the issuing of any of the visa documentation referred to below. LSI is not liable for any decisions made by the Immigration departments of the countries concerned.

UK: If your application is successful, we will provide a Confirmation of Acceptance of Studies (Tier 4 GSV and CSV applicants only). Tier 4 applicants must provide a Secure English Language Test (SELT) to establish their level of English is appropriate before they apply for their visa. Students whose level of English is lower than intermediate should use the Student Visitor route SVV or ESVV. See the following website for further details: www.ukba.homeoffice.gov.uk/studyingintheuk

USA: Once we have received your application, we will send a Proof of Funds form, which must be completed in order for LSI to issue you a Certificate of Eligibility (Form I-20), which is required in order to apply for a student visa at the US Consulate.

Canada: We will provide you with an invitation letter to assist you with your visa application.

New Zealand: In accordance with government regulations, visa support (Fees Receipt and Acceptance Letter) is only issued by LSI when full payment has been received. Full details of visa and permit requirements, advice on rights to employment in New Zealand while studying, and reporting requirements are available through the New Zealand Immigration Service and can be viewed on their website at: www.immigration.govt.nz. We strongly recommend LSI NZ students to check information on this website, including but not limited to, medical certificate requirements associated with visa applications. By agreeing to our Terms & Conditions upon enrolment, LSI NZ students are confirming that they have been made aware of information found on this website.

Australia: Visa application forms (Confirmation of Enrolment) may not be issued by the school until full payment has been received and the enrolment agreement has been signed and returned. The enrolment agreement includes reference to the pre-departure and grievance procedures information and can be found on our website: www.lsi.edu

Switzerland: We recommend you check the CH Immigration website for the most up to date information about Visas and Immigration regulations. For courses which are longer than 12 weeks, a student visa must be obtained prior to entry into Switzerland. Fees must be paid in advance in order to obtain the documents required for the student visa application. Please visit the website: www.bfm.admin.ch/bfm/en/home.html for full information about visa applications and travelling to Switzerland. The student visa application process for Zurich takes at least 3 months to complete.

5. Courier fees

If you enrol on a course in the USA less than 30 days before the course start date and require an I-20, a courier fee of US\$65 will be charged to cover the expedition of visa documentation. If you enrol more than 30 days before the course start date, documentation will be sent by normal postal service, unless you request and pay for the courier service. In all other countries, a courier service is available on request. UK: £75, Canada: CAD\$100, New Zealand: NZ\$115, Australia: AUS\$75, France: €115, Switzerland: CHF165

6. Under 18 year olds (19 in Vancouver)

LSI delivers adult courses (except for programmes advertised as being for Juniors). Therefore, students aged 16 and 17 will be attending classes and sharing facilities with students aged 18 and over. Under 18 year olds may be required to pay a guardian fee, provide custodianship documents, live in LSI-approved accommodation, book LSI's airport transfer service and purchase insurance. All students under 18 (19 in Vancouver) must provide a signed Parental Consent form prior to arrival, and for Canada they must also provide a signed Health Declaration and excursion waiver form.

New Zealand: Students under the age of 18 staying in family accommodation must book half-board and a return airport transfer. Unless otherwise requested by a parent or guardian, students under the age of 18 staying in family accommodation will be expected to return to their accommodation by no later than 22.00 hours each evening.

7. Health declaration

Students must report on their enrolment form any mental or physical illness, allergy, disability or condition and details of any associated medicines that may interfere with their ability to successfully complete their programme, that may impact the health and well-being of any other student, host or staff member, that may require monitoring, treatment or emergency intervention of any kind during the student's anticipated period of enrolment, or that may require special accommodations. LSI reserves the right to reject an applicant or terminate a student's enrolment in the programme if the student's continued participation represents a risk to their health and safety or to the health and safety of other students or staff, or if, notwithstanding reasonable accommodations, in the opinion of LSI, the student's physical or mental condition makes the student unable or unlikely to successfully complete their programme. Any refunds in such circumstances will be made at the discretion of LSI.

Immunizations: In order to register, all students must have had the required immunizations, subject to the current guidelines of local medical authorities where LSI schools operate. It is the student's responsibility to ensure that they have had the applicable immunizations before departure and they may be required to provide evidence upon arrival. More information about immunizations currently required can be obtained from the local LSI school.

8. Additional services

Any additional services (transfers, travel, laundry, telephone costs, excursions, medical costs, special diet, exam fees, change of accommodation and enrolment amendments) are not included in any fees unless specifically stated on a valid invoice.

9. Twin accommodation

At LSI's discretion, students may be required to book single room accommodation instead of twin room accommodation.

10. Travel and medical insurance

Travel and medical insurance is strongly recommended at all LSI schools for the duration of your stay, regardless of your course length or course/visa type. For some programme or visa types, insurance is compulsory (please check with the school for further details). It is your responsibility to ensure that you have the appropriate cover before departure and for the duration of your stay. Students may be required to show proof of medical insurance at the school upon arrival and may not be allowed to commence a course until satisfactory medical insurance has been obtained. Travel and medical insurance can be purchased from a third party through LSI when booking. Details of what this covers are available from your Educational Tour Operator. You are responsible for the belongings which you bring with you to LSI schools or accommodation and for taking out insurance for your own possessions.

Australia: The Australian government requires all students on Student Visas to join the Overseas Student Health Cover (OSHC) scheme, a health insurance plan for overseas students in Australia. Payment of AU\$48/month for compulsory OSHC for the duration of the student's visa must be made before a visa can be issued.

New Zealand: Most international students are not entitled to publicly funded health services while in New Zealand. If you receive medical treatment during your visit, you may be liable for the full costs of that treatment. Full details on entitlements to publicly funded health services are available through the Ministry of Health and can be viewed on their website at www.moh.govt.nz. In addition, The Accident Compensation Corporation provides accident insurance for all New Zealand citizens, residents and temporary visitors to New Zealand, but you may still be liable for all other medical and related costs. Further information can be viewed on the ACC website at www.acc.co.nz.

Switzerland: We recommend all students staying for periods up to 3 months apply for full travel and medical insurance before leaving their home country. Once a student is at the school, we provide assistance to those wishing to apply for Swiss medical insurance for periods of study extending beyond this initial 3 months.

11. Postponement and/or Changes

In the event of a course postponement and/or change, you may be re-booked at the rates currently in effect at the time of re-booking. 3 postponements and/or changes will be free of charge, while upon a 4th postponement request, LSI will charge a postponement fee, an amount equivalent to the registration fee.

12. Special Offers

Special Offers must be booked and paid for prior to the stated expiration date. The relevant special offer code must be provided at the time of booking. Promotion prices apply to new enrolments only. Existing enrolments cannot be cancelled and rebooked at the promotion price. Only one special offer is valid per enrolment. Special offers cannot be combined. All special offers are subject to availability and are subject to change.

GENERAL

1. Rules and regulations

Students' arrangements with LSI are governed by the law of the country where the particular school attended is located.

2. Programme changes

LSI reserves the right to change course dates, course curricula, course schedules, tutors, locations and programmes at any time at its discretion. In cases where the course is rescheduled prior to the start of the first course and the new date is unacceptable to the student, all fees will be refunded. However fees will not be refunded for changes to weekly timetables.

3. Arrivals and departures

Depending on the school, accommodation is booked from either Saturday or Sunday before the course start date until the Saturday or Sunday after the course end date. Please check with the individual school for details. A partial week may be counted as 1 week's accommodation. Students arriving between

22:30 – 6:00 may be asked to book alternative accommodation in a hotel on their first night due to late/early arrival at accommodation, or be charged an extra night of accommodation. Certain residences may also have set arrival times. Please check with the school for further details.

4. Residential housing deposit

A refundable deposit may be charged on arrival to students taking residential accommodation. The deposit is returned unless there is damage, loss or extra cleaning to be paid for on the student's departure. In some cases the deposit may be non-refundable if the booking is cancelled. Please refer to our various accommodation brochures for further details.

5. Late arrivals, vacations and absences

If you begin your enrolment late or are absent during your course, no refund will be made for the time missed. Periods of absence cannot be made up with a free extension of the course. Vacation dates are pre-built into the Academic Year and students cannot make changes to these dates. Breaks taken at other times will be marked as periods of absence. For other courses, granting of any Session Breaks after the course has started will be at the discretion of individual schools, according to visa regulations, and may incur a change fee (except in the USA) or be marked as a period of absence.

6. Public holidays

Classes are normally not held and most school facilities are closed on public holidays. All published course start dates fall on a Monday. If the Monday is a public holiday, the start date will fall on a Tuesday. Compensation will not be made for classes not offered on public holidays.

7. Meals and classes missed

No refunds or substitutions will be made for meals or classes missed due to exams, excursions, internships, first day orientation or other obligations that fall outside the normal schedule.

8. Substitution policy

If, after the placement test taken on arrival at the school, a student is found to be at a level which is not appropriate for their booked course, the school reserves the right to place the student in an appropriate level class, or LSI centre, which may have fewer lessons and a different curriculum. Students who do not have the ability to follow any course on offer may be required to terminate their studies with LSI. We also reserve the right to cancel courses at short notice due to insufficient demand.

9. Books and learning materials

All books and learning materials will be made available to students during their course. Unless otherwise stated, students share class sets of course books and receive photo copies.

In New Zealand, Australia, Canada, France & Switzerland a materials fee is charged. New Zealand: NZ\$20 p/wk (max 20 weeks), Australia: AU\$15 p/wk (max 20 weeks), Canada: CA\$75 (Cambridge courses), France: €10 p/wk (max 20 weeks) & Switzerland: CHF15 p/wk (max 20 weeks).

10. Duration of lessons/timetable/class sizes

All English lessons are 50 minutes in duration unless otherwise stated. Courses run from Monday to Friday and lessons are scheduled in the morning or the afternoon. LSI cannot guarantee a specific timetable.

11. LSI Level Policy

Through a rigorous system of skills testing, students are organised into classes with the other students in the school who have the closest equivalent language level. LSI operates up to six different levels, from Beginner to Advanced, which have been closely matched to the Common European Framework, TOEFL iBT, TOEIC, IELTS and University of Cambridge examinations. To reach each level students must master specific level objectives, demonstrated through test scores and class participation. Subject to student numbers, and ensuring the learning outcomes of every student in the class, LSI may operate bridge classes where two LSI levels are taught together.

12. Electives

Electives refer to the various options offered as part of LSI's Intensive 24, 25 and 30 lessons per week programmes. Electives include, but are not limited to, TOEFL iBT, TOEIC, IELTS, English for Business and Fluency. For a full list of electives available, please refer to the school pages on our website. In order to ensure all electives are available year round, subject to student numbers and ensuring the learning outcomes of every student in the class, courses may sometimes be combined.

13. Cambridge Language Assessment

Subject to student numbers and ensuring the learning outcomes of every student in the class, Cambridge 30 lessons per week programmes may be combined with LSI's Intensive English programme and/or electives.

14. Change fees

A minimum of 2 weeks' notice is required for any change. If you request a change of school location, course dates, accommodation or programme type after your course has started, you will be charged a change fee equivalent to the registration fee, which is payable at the time the request is made. LSI is not obliged to fulfil any change request. If changing to a location where fees are lower, the difference in fees will not be refunded. If changing to a more expensive location or programme, the difference in fees will be charged. You will not be charged a change fee if you extend your course.

All changes are subject to LSI's discretion and require approval of the Programme Director. It is the responsibility of the student to pay for any course or accommodation extensions. Any change of tuition resulting in a reduction in lessons will be treated as a termination of the existing booking and rebooking (except in the USA), and will thus be subject to the standard terms & conditions governing terminations (see "Termination Policy"). In addition, certain visa types may disallow changes to course type and length. Please ask the school for more information at the time of booking.

15. Expulsion/Suspension

Any student who commits a criminal offence, violates the LSI Code of Conduct or a school behavioural policy, has a poor attendance record (based on the school's attendance policy, whether or not such attendance is in breach of any visa attendance requirements), is absent for 10 consecutive days without notification (USA), or fails to pay an amount he

LSI Terms and Conditions (Continued...)

or she is directly or indirectly liable to pay LSI, may be expelled, suspended or removed from the course, school and any accommodation provided. No refund will be given and the immigration authorities will be informed.

16. Liability

The liability of LSI, its group companies, their directors, officers, employees, affiliates, Educational Tour Operators with respect to losses arising from negligence (except where such liability cannot be excluded as a matter of law), breach of contract or otherwise, will be limited in all circumstances to the full amount paid to LSI or the relevant LSI group company by the relevant student for the particular programme. Such companies and persons will in no circumstances have any liability for indirect or consequential losses or damages.

17. Force majeure

LSI will not be liable in cases where LSI is unable to fulfil any services to which they are contractually bound because of fire, natural disaster, act of government, failure of suppliers or subcontractors, labour disputes or other reasons which are beyond LSI's control.

18. Codes of practice

LSI has agreed to observe and be bound by the Code of Practice for the Pastoral Care of International Students as administered by our various local accrediting agencies. UK: British Council & ISI Private Further Education, USA: ACCET, Canada: Languages Canada, Australia: the Australian National Code of Practice 2007 and the Educational Services for Overseas Students Act 2000 (ESOS Act 2000) (information on which can be found at www.aei.gov.au), France: Qualité FLE, Switzerland: EAQUALS, New Zealand: NZQA. We strongly recommend all LSI NZ students to check NZQA's website www.nzqa.govt.nz before booking. By agreeing to our Terms & Conditions upon enrolment, LSI NZ students are confirming that they have been made aware of information found on this website.

19. LSI Student Code of Conduct

Students must agree to abide by LSI's Student Code of Conduct and other policies while attending LSI. Inappropriate conduct includes but is not limited to: (1) disruptions to the learning environment, including the classroom and online, (i.e. use of profanity, harassment, mobile phone use in classrooms, etc); (2) deliberate destruction, misuse, or theft of LSI property or the property of fellow classmates; (3) violence or threats of violence towards persons or property of students or LSI staff; (4) improper use of email or Internet access and (5) failure to comply with local copyright or criminal laws forbidding the misappropriation, copying or alteration of copyright-protected materials. Further details of LSI's Code of Conduct can be found at www.lsi.edu/code

Damage to property: LSI reserves the right to charge students who engage in vandalism, graffiti or criminal damage of any kind for the repair/replacement cost of any damage they cause. LSI also reserves the right to charge students responsible for damage caused to LSI property or 3rd party property by accident.

20. Student Visa UK, USA, Canada, New Zealand & Australia

At all LSI schools full attendance is expected. Student visa holders are required to provide LSI with a current residential address and telephone number at all times, maintain satisfactory academic progress and maintain satisfactory attendance, (subject to the school's own attendance policy). Students who fail to show up for their enrolment or do not maintain satisfactory attendance will be reported to the Department of Immigration and Citizenship (DIAC) in Australia, The Border Agency in the UK, Department of Homeland Security (DHS) in the USA, Citizenship and Immigration Canada (CIC) in Canada, or to New Zealand Immigration Services. In the UK, for students on Tier 4 visas, if 10 contact days are missed consecutively the student will be reported to the UK Border Agency. Information collected by LSI which personally identifies a student and information regarding a student's course progress may be shared with the Australian State and Federal or British government, Department of Homeland Security, state and accrediting agencies (USA), designated authorities, the Tuition Protection Service (Australia), students' parents, LSI staff and Educational Tour Operators. This information may include personal and contact details, course enrolment details and changes, and circumstances of any suspected breach by the student of any visa condition.

21. Prices

LSI has the right to change prices due to tax increases, governmental actions or other events beyond LSI's control. Prices listed for third party suppliers, including residence accommodation, are subject to change. If third party suppliers increase their prices after LSI has listed its annual prices, LSI reserves the right to pass on these increases to students. New Zealand: All fees, except homestay fees, are subject to a 15% government tax (GST). Should this be increased, our fees will increase accordingly.

22. Fees outstanding

Tuition fees include lessons, orientation meeting, use of computer room and internet in school, placement and progress testing, E-LSI online learning system, and a LSI certificate on completion of the course. LSI reserves the right to withhold the granting of a certificate attained by a student if tuition fees or any other fees remain outstanding, or other conditions are not met.

23. Photography, Filming and Sound Recording

LSI or the Educational Tour Operator may arrange to photograph or shoot video footage of students or use their written feedback for promotional purposes, both printed and online.

UK, France, Switzerland: students (and their parent/guardian if under 18 will be asked to give consent before any specific photography, filming or recording to agree to their participation. Withdrawal of consent can be made at any time by emailing info@lsi.edu

Rest of World: Any student who does not wish to participate should advise us at the time of booking and state at the time of the photographing or video shooting the wish not to participate. By accepting these terms and conditions the student (and their parent/guardian if under 18) gives consent to the use of these photographs or video footage without further consent or notification.

24. Online Learning

Online classes may be recording for training and quality assurance purposes. Changes to or cancellations of on-line lessons must give at least 36 hours notice. Cancellations made after this time will result in a lost class.

REFUND POLICY

1. Service Charges

Unless otherwise stated, enrolment fees are non-refundable. All other service charges having already been incurred by LSI, including but not limited to, courier fee, accommodation placement fee/deposit and medical insurance, will not be refunded (up to a maximum charge of US\$250 for LSI schools in California and US\$500 in other LSI USA schools).

2. Visa denials

On written notification of a visa rejection and receipt of relevant supporting documentation, 100% of fees will be refunded less enrolment fee, accommodation placement and all other (utilised) service charges. 2 weeks notice for accommodation is needed otherwise cancellation fees will apply. In all cases where a visa or visa support documentation has been issued, the relevant immigration authorities will be informed.

Australia: In Brisbane, in accordance with the Education Services for Overseas Students Act 2000, all course fees (tuition and non-tuition) will be refunded minus the lesser of the two following amounts a) 5% of the course fees received by LSI b) AU\$500.

3. Cancellation before the course start date

All cancellations must be in writing and sent by e-mail or post. The date of arrival at LSI of the email or of the letter determines the period of notice to be applied. Cancellations in the US may be made verbally.

3(a), Tuition

UK, Australia, France & Switzerland: For cancellations made 31 days or more prior to the course start date, all tuition fees are refunded. For cancellations made 1-30 days prior to the course start date, 2 weeks tuition fees are charged.

New Zealand: (in accordance with the NZQA and LSI refund policy).

For cancellations made prior to the course start date, all tuition fees are refunded.

USA: California For cancellations made prior to or on the course start date, all tuition fees are refunded minus US\$250 in non-refundable enrolment/service (non-tuition).

Massachusetts and New York LSI will retain cancellation fees equivalent to 4 weeks' worth of RRP tuition fees as listed on our website.

I-20 transfers - LSI cannot transfer students' I-20s to other institutions without having formally enrolled students at the school - i.e. without the student having started the first week of their programme. Students who do not arrive to start their course will have their I-20s cancelled.

Canada (Toronto): For cancellations made less than 7 days after the contract is made, 75% of all tuition fees are refunded (maximum \$400 retained by LSI). For cancellations or dismissals from the program 30 days or more before the start of the course, 75% of all tuition fees are refunded. For cancellations or dismissals less than 30 days before the start of the course, 60% of all tuition fees are refunded.

Canada (Vancouver): For cancellations made no later than 7 days after the contract is made, 100% of all tuition fees are refunded other than the Registration Fee. For cancellations or dismissals from the program more than 7 days after the contract is made, 90% of all tuition fees are refunded and LSI will retain no more than \$1000.

3(b), Accommodation

UK, Canada, New Zealand, Australia, France & Switzerland:

For cancellations made 14 days or more prior to the course start date, all accommodation fees are refunded, less any penalties incurred by LSI from 3rd party suppliers. For cancellations made 1-13 days prior to the course start date there is a charge of either 2 weeks accommodation fees or any penalties incurred by LSI from 3rd party suppliers (whichever is the greater sum).

USA: For cancellations made 30 days or more prior to the course start date, 100% of the accommodation fees will be refunded, less any actual housing costs incurred by LSI, including penalties from 3rd party suppliers. If less than 30 days' notice is provided for a cancellation, there is a charge of either 2 weeks accommodation fees or any penalties incurred by LSI from 3rd party suppliers (whichever is the greater sum).

4. Termination Policy – Cancellation after the course has started

'Termination' means stopping or leaving all or part of the course or courses booked, including extensions, once the first course has started. When determining the number of weeks completed, outside of California, a partial week will be counted as a whole week, provided the student was present at least one day during the scheduled week. In California, tuition fees for partial weeks are accounted for pro rata. Discounted tuition and accommodation packages used by the student will be charged at the recommended retail price, as listed on our website, when any refund is calculated. In all cases additional service charges (airport transfers, courier fees, enrolment fees, insurance, accommodation placement fee, programme supplement fee, etc.) are non-refundable and written notification of termination must be given to the school Principal or Director (In the US, notification of termination may be verbal.) Students who terminate their programme may not be eligible to receive a LSI certificate and will not be allowed to stay in LSI accommodation.

4(a), Tuition

UK, Australia, France & Switzerland: No refunds will be made for tuition. Tuition fees are non-transferable to other students. Tuition fees paid cannot be converted to alternate courses.

USA: If the student terminates after having completed more than 60% of the program in California or 50% in New York and Massachusetts, there is no refund. In all other cases, unused tuition fees are refundable. Unused tuition fees are calculated as follows: the amount owed equals the daily charge for the program (total institutional charge, divided by the number of days or hours in the program), multiplied by the number of days student attended, or was scheduled to attend, prior to withdrawal. The value of tuition taught is based on RRP prices as listed on our website. For terminations, I-20s will be cancelled immediately. Students wishing to transfer their I-20s to other institutions should check with their LSI school for conditions. Extensions are treated as new programmes and are subject to standard termination fees.

California Tuition fees for unused classes are refunded minus US\$250 in non-refundable enrolment/service (non-tuition). Please note, in California a student may cancel a programme (as opposed to terminate a programme) either on the first day of class or the 7th day after the enrolment agreement is signed, whichever is later.

Massachusetts and New York For students whose last day of attendance occurs at any point in the first four weeks of their initial period of financial obligation, the institution will retain the charges applicable to the first four weeks. For students whose last date of attendance occurs after the first four weeks but before or at the mid-point of their period of financial obligation, the institution may retain a prorated amount of tuition. For students whose last date of attendance occurs after the midpoint, the institution will retain all of the charges for that period.

Canada (Toronto): Students wishing to terminate must give 4 weeks' notice to the School Director. The refund will be calculated as follows according to the percentage of the course completed including the notice period: 0-10% of the programme has been completed: 50% refund of unused tuition fees, 11-29% of the programme has been completed: 30% refund of unused tuition fees, 30% or more of the programme has been completed: 0% refund of unused tuition fees.

Canada (Vancouver): Students can withdraw at any time without advanced notification. The refund will be calculated as follows according to the percentage of the course completed including the notice period: 0-10% of the programme has been completed: 90% refund of unused tuition fees, 11-29% of the programme has been completed: 70% refund of unused tuition fees, 30-49% of the programme has been completed: 50% refund of unused tuition fees, 50% or more of the programme has been completed: no refund is due.

4(b), Accommodation

UK, USA, Canada, Australia, Switzerland & France: Students must give 4 weeks' notice in writing to the School. A refund will be made of the unused accommodation fee less the applicable notice period and the applicable change fee. Penalties incurred by LSI from 3rd party suppliers as a result of accommodation terminations will be charged to the student (if in excess of any fees held from the notice period). For terminations made after 50% of the booking has been completed, no refund will be given in the UK.

5. New Zealand Termination Policy:

LSI NZ provides Termination refunds based on the package price (tuition, accommodation & all other service charges). For courses of 3 months or longer, students withdrawing within the first 10 working days of the course must be refunded in full less a deduction for costs incurred by LSI, up to a maximum of 25% of the fee total paid. LSI will provide the student with details of the cost components for the purpose of working out the maximum deductible percentage. In the event of a dispute over the cost component deducted, the student can contact iStudent Complaints by phone on 0800 00 66 75 or visit the iStudent Complaints website: www.fairwaysolution.com/i-student-complaints. (For Domestic Students: for courses of 3 months or longer, withdrawals made within the first 8 calendar days of the course will be refunded in full less a deduction of 10% or \$500 payable to LSI, whichever is the lower amount).

Where a foreign student enrolled on a course of study that is less than three months' duration withdraws from such a course, the following minimum refund entitlement will apply:

a) For courses of up to and including four weeks and six days: where a student withdraws within the first two days of the course LSI will retain 50% of the full amount and refund the balance to the student. b) For courses of five weeks or more but less than three months: where a student withdraws within the first five days of the course LSI will retain 25% of the full amount and refund the balance to the student. Otherwise there are no refunds.

6. Method of Refund Payments

Refunds will be made via the Educational Tour Operator to whom the fees were originally paid, or via the same payment method and destination from which the fees were originally paid. For a calculation of fees refundable, please see above. With the exception of students studying in California, refunds made via an Educational Tour Operator are subject to the Educational Tour Operator's own cancellation refund policies. All refunds will be made within 45 days of written notification unless otherwise stated.

Australia: Refunds will be paid within 14 working days of written notification. In accordance with sections 27-31 of ESOS Act 2000, providing the student has not withdrawn before the default day, LSI will pay a full refund to the student within 14 days if the course being offered does not commence on the agreed starting day or the course stops being provided at any time after it starts and before it is completed. This agreement and the availability of the complaints and appeals process does not prevent the student from taking action under Australia's customer protection laws.

New Zealand: LSI NZ is a booking, placing, and collection agent for Homestay (HB & B&B) and Hostel Accommodation. Any accommodation refunds will be made to the student on completion of the course if the student has given 2 weeks' notice in writing.

LEGALLY BINDING

The LSI Enrolment Agreement is legally binding when signed by the student and/or the student's legal guardian, and is accepted by LSI.

SUBJECT TO CHANGE

These Terms and Conditions may differ according to any changes in policy made by the accrediting body or government where the school is located. You will be notified at the time of booking of any such amendments. Any dispute, claim or other matter arising will be subject to the current laws in the destination country.

All prices & dates in this brochure are correct at the time of printing, but are subject to change.

Student Information

Family name:
(as it appears in the passport)

First name(s):
(as it appears in the passport) Male Female

Date of birth (D/M/Y):

Country of birth: City of birth (required for US I-20):

Nationality/Citizenship:

Mother tongue:

Occupation:

Full address:

City: Postcode:

Passport number:

Country:

Student email (required for e-learning registration):

Telephone (home): Telephone (mobile):

Students under 18 years of age (19 in Vancouver):

Name and surname of legal guardian:

Telephone number of legal guardian:

Email of legal guardian:

Permanent address of legal guardian:

City: Postcode:

LSI Representative Information

Partner name/contact person:

Country:

Email:

Telephone:

For all partner bookings, please confirm who will be responsible for the total payment of this booking by selecting an option below:

Partner Partner and Student (please give details including amounts): Student

Partner signature:

Course Information

School name and location:

Course name*: Lessons/week:

Number of weeks: Start date (DD/MM/YY):

Language level: Type of visa sought:

* Please check the relevant school page and make sure your chosen course is offered at the school you have selected. For multi-centre courses please contact the LSI booking office.

Course Fees

Registration: Tuition: Housing:

Sundries: Total charges for the course:

(Tuition includes all equipment, supplies, learning materials (print & digital), internal LSI assessments. Course payments are subject to LSI T&Cs. See previous pages.)

Accommodation

Accommodation type: Room type: Meals per week: (if different options are advertised)

Homestay Residence Single B&B Full-board Half-board

Apartment Hotel Twin (2 beds)* Double (1 bed)*

I will arrange my own

Homestay Supplements: (Only where advertised. Extra charges apply) Zone: (If applicable)

Private bathroom/Executive† Close to school supplement (London and New York)†

Accommodation name: (if known)

Check-in date (D/M/Y): Check-out date (D/M/Y):

Do you have any special requests? (e.g. medical requirements, allergies, special diet, no cats/dogs) If yes, please specify: Do you smoke? Yes No

Other accommodation supplements may apply, including seasonal supplements during the summer or at Christmas. See price list or contact the school for details.

* 2 students booking together † Subject to availability. Please check before booking.

Additional Services

Would you like LSI to organise insurance? Yes No If not, you will need to organise your own medical insurance.

If you are travelling to Australia, would you like Overseas Student Health Cover? (Mandatory for student visa) Yes No

Would you like an airport transfer? (If yes, please send us your flight details) On arrival: Yes No On departure: Yes No

Would you like to receive your course confirmation/visa application documents by courier (express) mail for an additional fee? Yes No

I would also like to book the following services: (Not available in all destinations. Additional fees may apply. Please check the relevant school page)

Internship Placement University Pathway

Payment

At this time, I wish to pay: the enrolment fee the full fees

Method of Payment:

I wish to pay by credit card. (Please pay online at www.lsi.edu or contact LSI to arrange payment)

I enclose a cheque made payable to Language Studies International (LSI). (Not available at LSI Zurich) Cheque amount:

I would like to pay via bank transfer. Please send me transfer details.

I am sponsored by:

Medical and Psychological Conditions

Do you have a disability, impairment or long-term medical or psychological condition which may affect your studies? This includes, but is not limited to, learning disabilities, anxiety and mental health issues, and dietary allergies.

Yes No If yes, please provide further information. Please see our Terms and Conditions/Health Declaration.

Declaration

I authorise any licensed hospital or physician to initiate medical treatment for myself in case of medical emergency or for my child if he/she is under 18 years of age (19 in Vancouver).

I confirm that I have read, understood and agree to be bound by LSI's Terms and Conditions (www.lsi.edu/terms).

In order for you or your child to study with us, LSI processes your data and/or that of your child. How and why we do this, and your rights over this data, are in our Privacy Statement.

I have read, understand and consent to LSI processing the data as described in our Privacy Statement (www.lsi.edu/privacy)

Student Signature: Date:

Signature of parent/guardian*: Date:

* Required if student is under 18 years old or 19 years old in Vancouver

Special Promotion Code: