

2026 Accommodation


Auckland, New Zealand





A \$NZ 330 placement fee
applies to all accommodation.


Homestay

Our homestays are carefully selected and offer students the opportunity to learn more about the Kiwi culture in a comfortable setting while studying English in Auckland.




welcoming & friendly
atmosphere


single and twin
room options


good & reliable
transport links

Key Information

- Carefully selected by our Accommodation Officers and visited on a regular basis
- Choice of single rooms (or twin rooms if two students book for the same time period) with bed and breakfast or half-board
- Students with B&B bookings normally don't have access to kitchen facilities
- All bed linen and towels provided and changed weekly
- Most host families will wash the student's laundry at least once a week at no additional cost
- Good and reliable transport links
- Arrivals Saturday to Saturday or Sunday to Sunday (for the period of the course) - additional nights are subject to availability
- Students under 18 must book half board accommodation



Private Bathroom Homestay option

Some homestays offer a private bathroom (either en-suite or for sole use). Availability is limited—please contact us if you're interested.

Homestay Prices

Extra Night Rates
(per person per night)**

Homestay Weekly Rates (per person per week)	2026	2026
Single room, B&B	NZ \$325	NZ \$80
Single room, Half Board	NZ \$410	NZ \$85
Single/Twin room, Half Board, Under 18's	NZ \$430	NZ \$90
Twin room*, B&B	NZ \$325	NZ \$80
Twin room*, Half Board	NZ \$410	NZ \$85

No Extra Nights offered in High Season.

Supplemental Rates (per person per week)	2026
Winter Supplement (Jun 1 – Aug 31)	NZ \$10
Special Diets B&B / HB	NZ \$40/80
Christmas Supplement (Dec 23 - Jan 3, 2025)	NZ \$90
Executive Supplement	NZ \$90

Key

B&B = Bed and Breakfast (Breakfast only)

HB = Half Board (Breakfast and Dinner)

*For students booking together with the same arrival and departure dates.

**Extra nights are subject to availability. Please check with the school before booking flights.

Students should register for an AT HOP card, this is a smart card you can add money to, so you can pay for bus, train or ferry fares in Auckland. Top up your card before you travel, then tag on and off public transport services to pay as you go. Our families will help students get an AT HOP Card the day they arrive (unless they arrive on a Sunday late as all the shops are closed around 5:30 – 6pm). LSI Auckland will cover The AT HOP card in orientation on the student's first day and assist students with organising their travel card. Students who study for 16 weeks are eligible for a discount on travel fees. For more information visit: <https://at.govt.nz/bus-train-ferry/at-hop-card/>



Residences

A \$NZ 330 placement fee applies to all accommodation.

Park Towers

110 Grafton Rd, Auckland 1010

All residences are subject to availability

These options are more suitable for an independent student who is looking for a clean and basic accommodation at an affordable price. All students must be 18 or older unless specified otherwise.



Location

Located on Grafton Road, a 12-minute walk to LSI and the city centre.

Minimum age

18

Minimum stay

4 weeks

Rooms

Furnished Studio

Private Bathroom

No. There is 1 bathroom per every 15 residents (1 male and 1 female bathroom on each floor)

Meals

Self-catering

Facilities

Desk, fridge, wardrobe, heater, media room, study room, kitchen facilities, Wi-Fi, laundry room, Common area with TV, gardens, lawn area, gazebo. Each floor (30 residents - mixed genders 50/50) has 1 kitchen, 1 laundry room and 1 private lounge.

Availability

Year round. This accommodation is booked through Accommodation Coordinator at LSI.

Check-in & Check-out

Check in from 2:00PM and check out by 12:00AM.

Transport

Public transport is close by on Park Road - Inner Link and on Grafton Road - Bus Route #75.

Other

Move-in/Arrival Pack Rental \$100 (non-refundable)*. Including bed linens and blankets, towels, kitchen utensils.

Payment

All accommodation fees must be paid to LSI 4 weeks before start date to confirm booking. On arrival, credit Card details are taken at Check-in, charges only for incidentals or damages. Extra night bookings are accepted.

Cancellation Policy

Cancellations or changes within 4 weeks and no show reservations will incur two week's rental charges.

Prices (per person per week)	2026
Furnished Studio	NZ \$335
Furnished Studio (Couple)*	NZ \$240

* For students booking together with the same arrival and departure dates



Location

In the CBD, a 5-minute walk to LSI and the city centre.

Minimum age

18

Rooms

Single

Private Bathroom

No, shared on each floor

Meals

Self-catering

Facilities

Mini-fridge, wardrobe, lounge with TV, kitchen facilities and utensils, Wi-Fi, laundry room, on-site fitness centre

Availability

Year round

Check-in & Check-out

Check in from 2:00PM and check out by 10:00AM.

Other

Clean linen supplied weekly. 24/7 managers.

Deposit required

Yes, refundable bond deposit (upfront fee upon check-in): For stays less than 28 nights: \$70. For stays more than 28 nights: 1 week accommodation fee. Refundable Bond is refundable at the end of the stay as long as there is no damage or items missing from the room.

Cancellation Policy

Cancellations or changes to bookings must be made 2 weeks prior to check in date. Cancellations or changes within 2 weeks and no show reservations will incur two week's rental charges.

Prices (per person per week)	2026
Single room	NZ \$505
Double room*	NZ \$285
Twin room*	NZ \$320

*For students booking together with the same arrival and departure dates



Location

Located at the top of Queen Street, a 2-minute walk from LSI Auckland.

Minimum age

18

Minimum Stay

7 nights

Rooms

Single and double rooms available

Meals

Breakfast: NZ\$ 15 per day

Breakfast and Dinner: NZ\$ 40 per day

Facilities

Complementary Wi-Fi, gym, air conditioning, car park (for an additional fee), onsite bar and restaurant.

Availability

Year round

Check-in & Check-out

Check in from 2:00PM and check out by 11:00AM.

Other

24-hour front desk, room service.

Cancellation Policy

Bookings of 0-7 days: 24 hours before arrival free cancellation, otherwise 1 night cancellation charge.

Bookings of 8-30 days: 7 days before arrival free cancellation, otherwise 3 nights cancellation charge.

Bookings of 31+ days: 14 days before arrival free cancellation, otherwise 1 week cancellation charge.

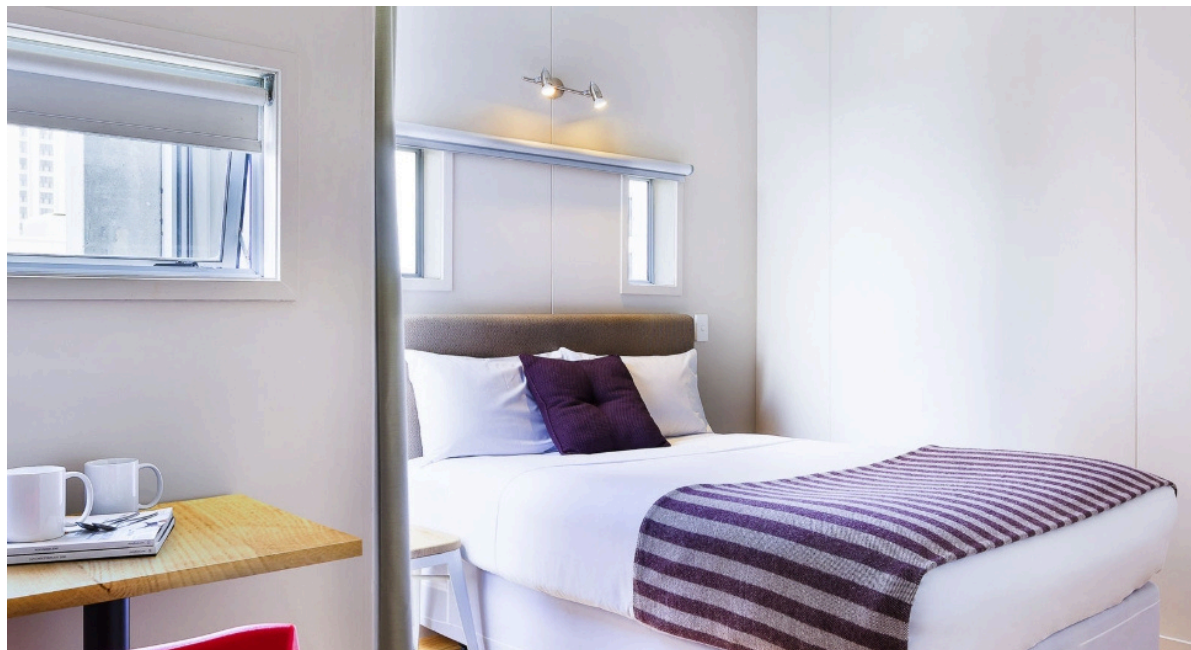
Any no-show bookings will be charged as per above cancellations depending on length of stay.

Prices (per person per week)*	2026
Single Room	NZ \$610
Double Room [^]	NZ \$350
Twin Room	NZ \$380
High Season Supplement**	NZ \$140

*prices subject to change – confirm at time of booking

[^] For students booking together with the same arrival and departure dates

** High season period: 1 February – 31 March & 1 October – 15 December 2026. Fully booked: 31 December 2026.



Location

The hotel is conveniently located just a 20-minute walk from LSI Auckland.

Minimum age

18+

Rooms

Single room with kitchenette

Twin room with two single beds and a kitchenette

Single room with one double bed and a kitchenette

Rooms are compact and have limited storage space.

Private Bathroom

Yes

Meals

Self-catering. A number of cafés and restaurants near the hotel offer convenient options for meals.

Facilities

Free Wi-Fi, laundry facilities and snack and beverage machine.

Availability

Year round

Check-in & Check-out

Check in from 2:00PM and check out by 10:00AM.

Cancellation Policy

Prepaid reservations are generally non-refundable.

Prices (per person per week)*	2026
Single Room (high floor)	NZ \$435
Twin Room with kitchenette	NZ \$263 (NZ\$ 526 per room)
Single Room Deluxe with kitchenette	NZ \$575

Independent Accommodation Suggestions:

Lylo**

54 Cook St, Auckland 1010



Location

In the heart of Auckland, a 12-minute walk to LSI.

Minimum age

18

Rooms*

Single pod in 6-bedroom room (mixed gender)

Single pod in 6-bedroom room (female only)

Double room

Twin room

Queen room

Private Bathroom

Single pods and double rooms offer shared bathroom. Twin and queen rooms are en-suite.

Meals

Self-catering

Facilities

Room safe, TV, bed linen, communal kitchen, laundry facilities, on-site bar, multi-use work spaces for work and leisure, free internet.

Availability

Year round. Maximum 4 week stay.

Check-in & Check-out

24 hour self check-in, 24/7 reception.

Other

Towels are available at reception for an additional cost. Pods have felt screens for privacy. Dedicated luggage storage lockers available.

Cancellation Policy

Bookings can be cancelled without penalty up to 2pm the day prior to check in.

****Please note students must book this accommodation directly with Lylo. For more details, please visit: www.lylo.com/auckland/**

Use promo code **LSILYLO** to receive 15% off the advertised prices. For more details click [here](#)

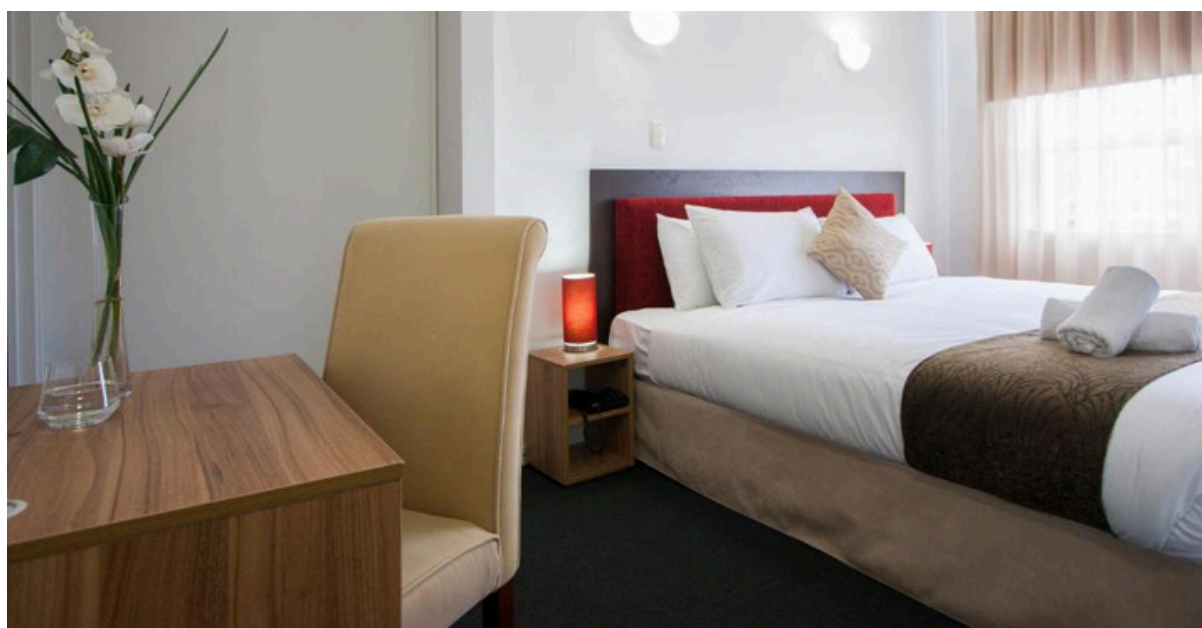
*Additional rooms types may be available; please refer directly to Lylo's website for up-to-date options.

Hotels

This is just a sample of the hotels that Auckland offers. To compare and book from a range of Auckland hotels, visit www.booking.com or www.wotif.co.nz to see their Auckland accommodation list.

Ascotia Off Queen

3-5 Scotia Place, Auckland 1010



Location

Just a 1-minute walk to LSI Auckland.

Minimum age

18

Rooms

Twin, queen, king rooms, executive staying

Meals

Self-catering

Facilities

Range available depending on room.

Availability

Year round

Check-in & Check-out

Check in from 3:00PM and check out by 10:00AM.

Other

24-hour front desk

Cancellation Policy

Cancellations must be received by 24 hours prior to check-in time.

Please note students must book this hotel directly with the Hotel. For more details, please visit: <https://vrhotels.co.nz/ascotia-off-queen/>

2026 Prices (per person per week)

Twin room

Contact Hotel Directly

Queen room

Contact Hotel Directly

King room

Contact Hotel Directly

Parkside Hotel & Apartments Auckland *100 Greys Avenue, Auckland 1010*



Location

Overlooking Myers Park, a 5-minute walk from LSI Auckland.

Minimum age

18

Rooms

Deluxe rooms and suites available

Meals

Self-catering

Facilities

Sky TV, Wi-Fi, refrigerator, microwave, electric kettle, minibar, tea/coffee making facilities, restaurants, pool, gym, conference facilities.

Availability

Year round

Check-in & Check-out

Check in from 2:00PM and check out by 10:00AM.

Other

24-hour front desk, currency exchange, room service.

Cancellation Policy

Cancellations depend on the booked rate/package.

Please note students must book this hotel directly with the Hotel. For more details, please visit: <https://www.parksidehotel.co.nz>

2026 Prices (per person per week)

Deluxe room

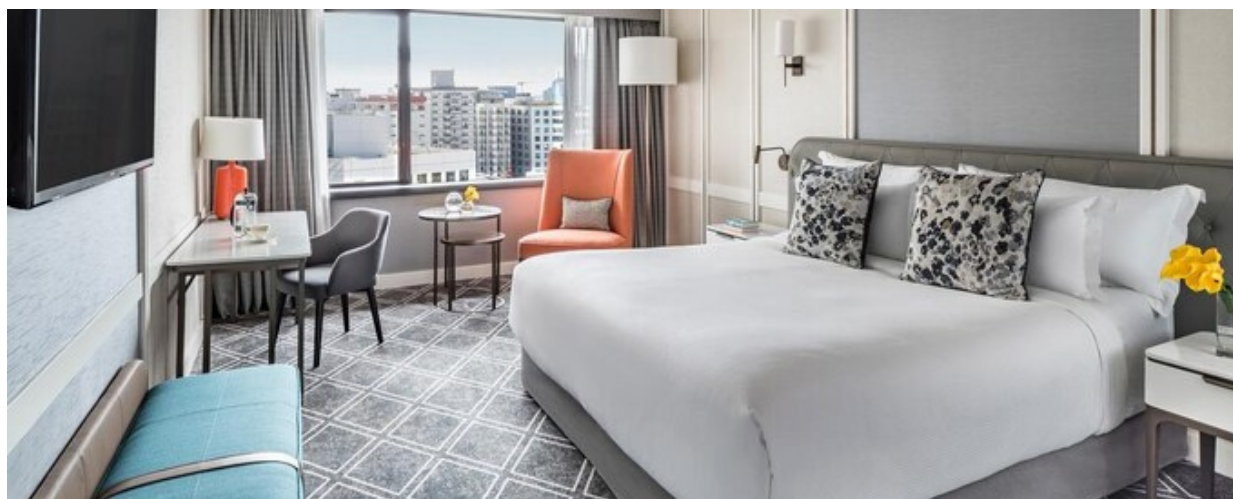
Contact Hotel Directly

Suite

Contact Hotel Directly

Cordis Hotel

83 Symonds St, Auckland 1010



Location

Near Symonds Street overbridge and a 3-minute walk to LSI Auckland.

Minimum age

18

Rooms

Standard, family and club rooms, and suites available

Meals

Self-catering

Facilities

Wi-Fi, cable TV, tea/coffee making facilities, hairdryer, restaurants/bar, conference facilities, pool, gym, spa, business centre.

Availability

Year round

Check-in & Check-out

Check in from 3:00PM and check out by 11:00AM.

Other

24-hour front desk, and in-room dining, butler and room service.

Cancellation Policy

Free cancellations 24 hours in advance. The fee of the first nights accommodation will be charged for cancellations received after 4pm on the day of arrival.

Please note students must book this hotel directly with the Hotel. For more details, please visit: <https://www.cordishotels.com/en/auckland>

2026 Prices (per person per week)

Standard room	Contact Hotel Directly
Family room	Contact Hotel Directly
Suite	Contact Hotel Directly